

Appendix B15
IW Water Asset
Alterations



BUSCONNECTS DUBLIN CORE BUS CORRIDORS INFRASTRUCTURE WORKS

KIMMAGE TO CITY CENTRE CORE BUS CORRIDOR SCHEME

IW WATER ASSET ALTERATIONS, RECORDS AND PROPOSED WORKS.	
DRAWING SERIES NUMBER(S)	DRAWING SERIES DESCRIPTION
BCIDD-ROT-UTL_IX-0011_XX_00-DR-CU-0006	KIMMAGE TO CITY CENTRE CORE BUS CORRIDOR SCHEME. IW WATER ASSET ALTERATIONS. COVER SHEET
BCIDD-ROT-UTL_KP-0011_XX_00-DR-CU-0006	KIMMAGE TO CITY CENTRE CORE BUS CORRIDOR SCHEME. IW WATER ASSET ALTERATIONS. KEY PLAN
BCIDD-ROT-UTL_UW-0011_XX_00-DR-CU-0001 to 0014	KIMMAGE TO CITY CENTRE CORE BUS CORRIDOR SCHEME. IW WATER ASSET ALTERATIONS. DRAWINGS.

\\wddubp1u2019101917117-02_WIP08 MODELS01 CAD01 DWG03 STG 3 - STATUTORY PROCESS (M)01 PLANNING11 KIMMAGE/COVER SHEETS/BCIDD-ROT-UTL_IX-0011_XX_00-DR-CU-0006.dwg

Disclaimer

a. © National Transport Authority (NTA) 2022. This drawing is confidential and the copyright in it is owned by NTA. This drawing must not be either loaned, copied or otherwise reproduced in whole or in part or used for any purpose without the prior permission of NTA.

b. This drawing is to be used for the design element identified in the titleblock. Other information shown is to be considered indicative only. The drawing is to be read in conjunction with all other relevant design drawings.

c. O.S. data used for plans are printed under © Ordnance Survey Ireland Government of Ireland. All rights reserved. Licence Number 2022/OSI_NMA_180 National Transport Authority. All elevations are in metres and relate to OSI Geoid Model (OSGM15) Mean Head. All Co-ordinates are in Irish Transverse Mercator Grid (ITM) as defined by OSI active local GPS station.

d. Information concerning the position of apparatus shown on this drawing is based on drawings supplied by the utility owners and/or the utility works contractor, whilst every care has been taken in the preparation of this drawing, positions should be taken as approximate and are intended for general guidance only and no representation is made by the NTA as to the accuracy, completeness, sufficiency or otherwise of this drawing and the position of the apparatus. The information contained herein does not purport to be comprehensive or final as the apparatus is subject to being altered and/or superceded. Recipients should not rely on this information. Any liabilities are hereby expressly disclaimed.

e. The information contained herein has been provided by the NTA but does not purport to be comprehensive or final. Recipients should not rely on the information. Neither the NTA nor any of its directors, officers, employees, agents, stakeholders or advisers make any representation or warranty as to, or accept any liability or responsibility in relation to, the adequacy, accuracy, reasonableness or completeness of the information provided as part of this document or any matter on which the information is based (including but not limited to loss or damage arising as a result of reliance by recipients on the information or any part of it). Any liabilities are hereby expressly disclaimed.

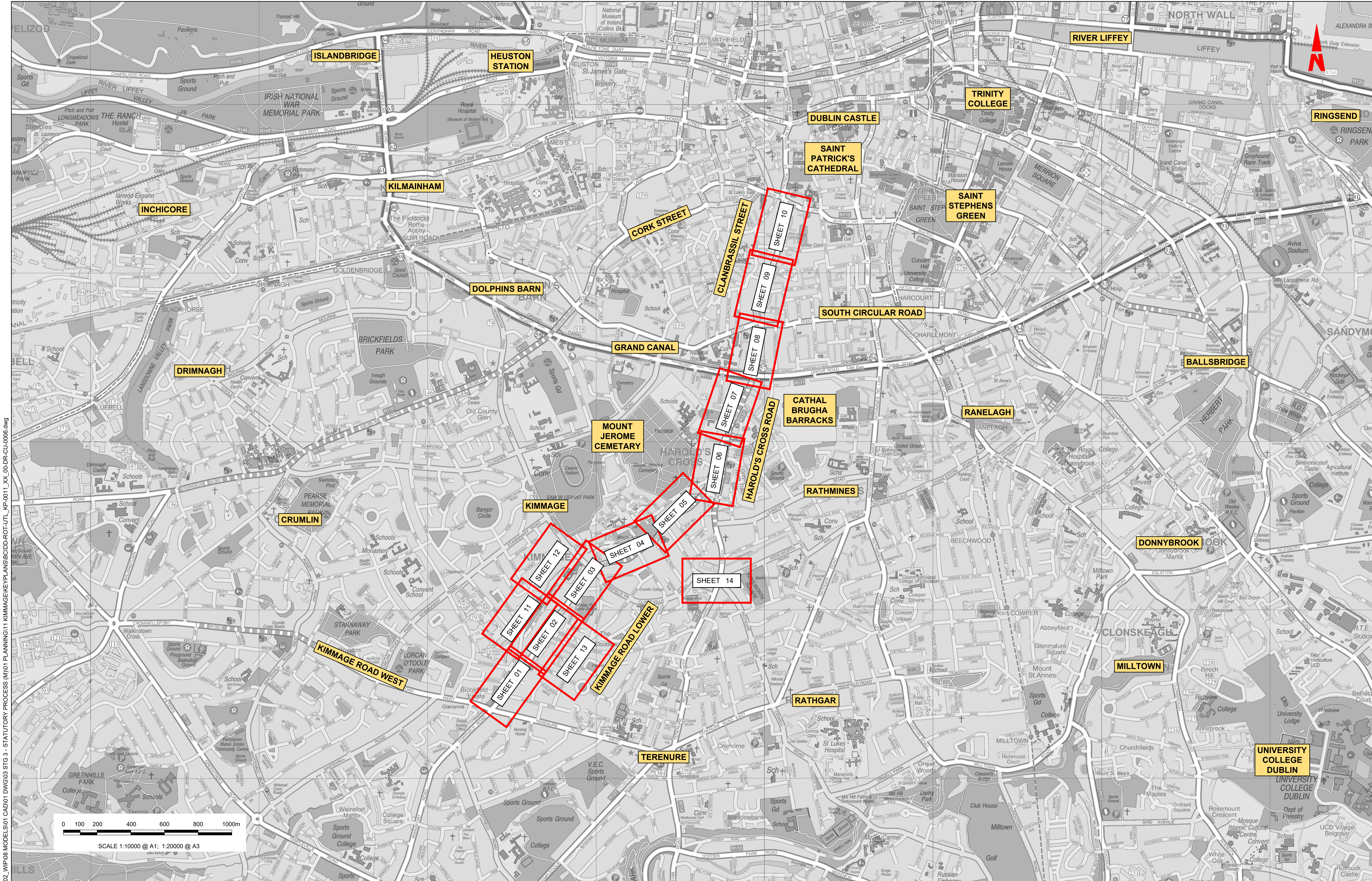


Rev	Date	Drm	Chk'd	App'd	Description
M01	FEB 2023	CG	SMG	SMG	ISSUE FOR PHASE 4: PLANNING

Client NTA Údarás Náisiúnta Iompair National Transport Authority		Engineering Designer ROD TYP SA RUGHAN & O'DONOVAN		
Date FEB 2023	Scale NTS @ A1 NTS @ A3	Drawn CG	Checked SMG	Approved SMG
Programme Code BCIDD	Originator Code ROT	QMS Code		

Programme Title BUSCONNECTS DUBLIN CORE BUS CORRIDORS INFRASTRUCTURE WORKS			
Drawing Title KIMMAGE TO CITY CENTRE CORE BUS CORRIDOR SCHEME IW WATER ASSET ALTERATIONS COVER SHEET			
Drawing File Name BCIDD-ROT-UTL_IX-0011_XX_00-DR-CU-0006	Sheet Number 06 of 0	Status A	Rev M01

DO NOT SCALE USE FIGURED DIMENSIONS ONLY



\\dub01\p\2019\19117-02_WIP08_MODELS\01_CAD\01_PLANNING\11_KIMMAGE\PLANS\BCIDD-ROT-UTL_KP-0011_XX_00-DR-CU-0006.dwg

0 100 200 400 600 800 1000m
SCALE 1:10000 @ A1; 1:20000 @ A3

Disclaimer
 a. © National Transport Authority (NTA) 2022. This drawing is confidential and the copyright in it is owned by NTA. This drawing must not be either loaned, copied or otherwise reproduced in whole or in part or used for any purpose without the prior permission of NTA.
 b. This drawing is to be used for the design element identified in the titleblock. Other information shown is to be considered indicative only. The drawing is to be read in conjunction with all other relevant design drawings.
 c. O.S. data used for plans are printed under © Ordnance Survey Ireland Government of Ireland. All rights reserved. Licence Number 2022/OSI_NMA_180 National Transport Authority. All elevations are in metres and relate to OSi Geoid Model (OSGM15) Mean Head. All Co-ordinates are in Irish Transverse Mercator Grid (ITM) as defined by OSi active local GPS station.
 d. Information concerning the position of apparatus shown on this drawing is based on drawings supplied by the utility owners and/or the utility works contractor, whilst every care has been taken in the preparation of this drawing, positions should be taken as approximate and are intended for general guidance only and no representation is made by the NTA as to the accuracy, completeness, sufficiency or otherwise of this drawing and the position of the apparatus. The information contained herein does not purport to be comprehensive or final as the apparatus is subject to being altered and/or superseded. Recipients should not rely on this information. Any liabilities are hereby expressly disclaimed.

The information contained herein has been provided by the NTA but does not purport to be comprehensive or final. Recipients should not rely on the information. Neither the NTA nor any of its directors, officers, employees, agents, stakeholders or advisers make any representation or warranty as to, or accept any liability or responsibility in relation to, the adequacy, accuracy, reasonableness or completeness of the information provided as part of this document or any matter on which the information is based (including but not limited to loss or damage arising as a result of reliance by recipients on the information or any part of it). Any liabilities are hereby expressly disclaimed.

Rev	Date	Drm	Chk'd	App'd	Description
M01	FEB 2023	CG	SMG	SMC	ISSUE FOR PHASE 4: PLANNING

Client
NTA
 Údarás Náisiúnta Iompair
 National Transport Authority

Engineering Designer
CIROD
 TYPSA

Programme Title
BUSCONNECTS DUBLIN
CORE BUS CORRIDORS INFRASTRUCTURE WORKS

Drawing Title
 KIMMAGE TO CITY CENTRE CORE BUS CORRIDOR SCHEME
 IW WATER ASSET ALTERATIONS
 KEY PLAN

Date
 FEB 2023

Scale
 1:10,000 @ A1
 1:20,000 @ A3

Programme Code
 BCIDD

Originator Code
 ROT

QMS Code
 CG

Checked
 SMG

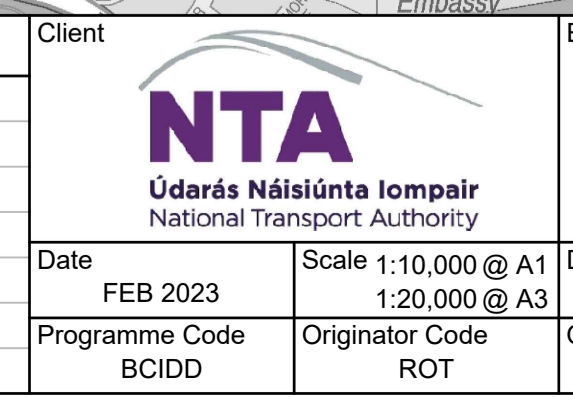
Approved
 SMG

Drawing File Name
 BCIDD-ROT-UTL_KP-0011_XX_00-DR-CU-0006

Sheet Number
 06 of 01

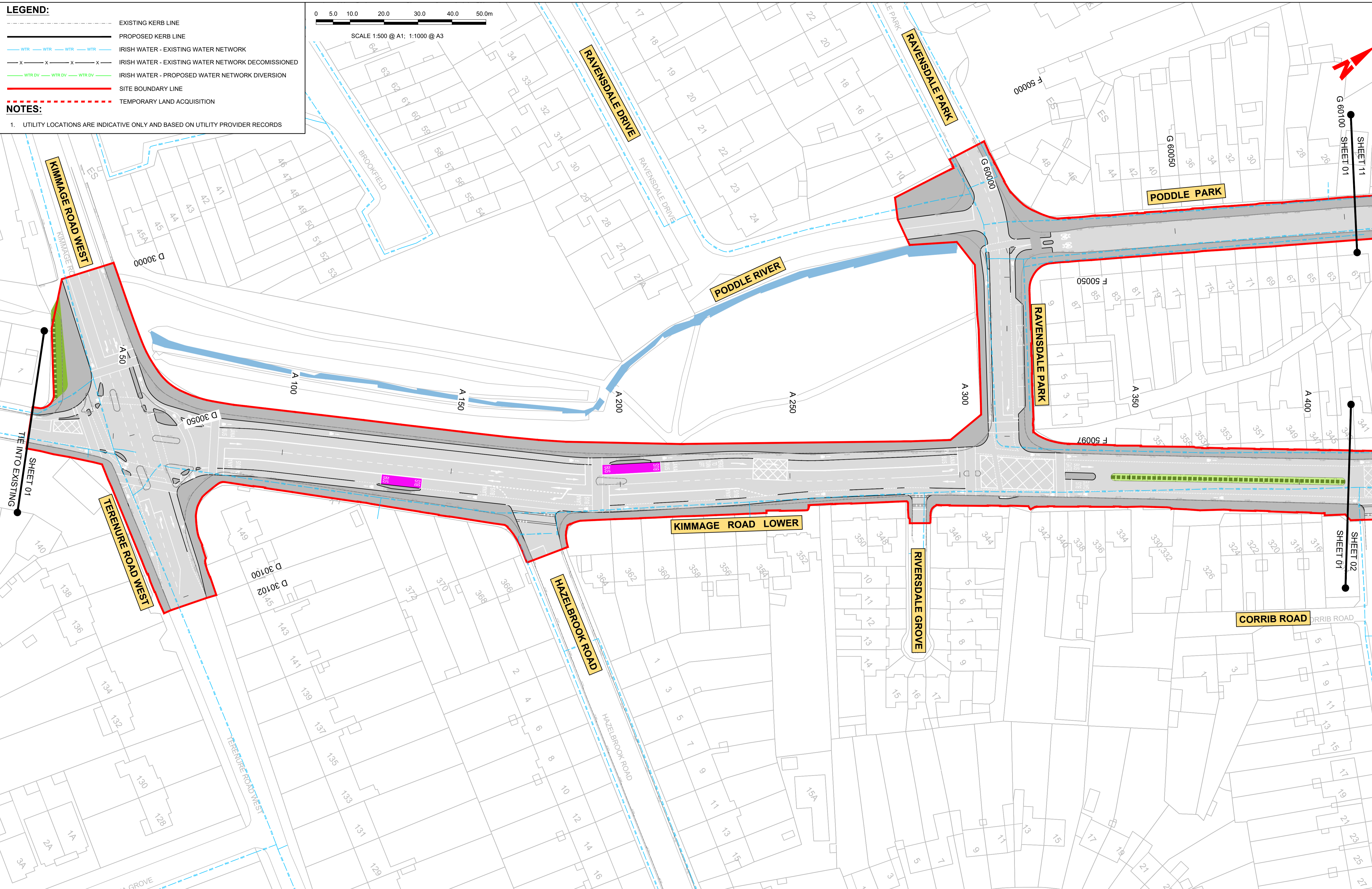
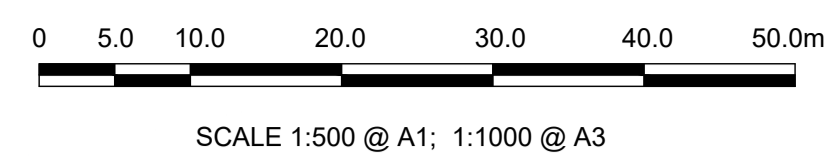
Status
 A

Rev
 M01



DO NOT SCALE USE FIGURED DIMENSIONS ONLY

- LEGEND:**
- EXISTING KERB LINE
 - PROPOSED KERB LINE
 - WTR — WTR — WTR — WTR — IRISH WATER - EXISTING WATER NETWORK
 - x - x - x - x - IRISH WATER - EXISTING WATER NETWORK DECOMMISSIONED
 - WTR DV — WTR DV — WTR DV — IRISH WATER - PROPOSED WATER NETWORK DIVERSION
 - SITE BOUNDARY LINE
 - - - - - TEMPORARY LAND ACQUISITION
- NOTES:**
- UTILITY LOCATIONS ARE INDICATIVE ONLY AND BASED ON UTILITY PROVIDER RECORDS



\\produbhp1u201917119117-02_WIP08 MODELS01 CAD01 DWG03 STG 3 - STATUTORY PROCESS (M)01 PLANNING11 KIMMAGE/BCIDD-ROT-UTL_UW-0011_XX_00-DR-CU-0001.dwg

Disclaimer

a. © National Transport Authority (NTA) 2022. This drawing is confidential and the copyright in it is owned by NTA. This drawing must not be either loaned, copied or otherwise reproduced in whole or in part or used for any purpose without the prior permission of NTA.

b. This drawing is to be used for the design element identified in the title block. Other information shown is to be considered indicative only. The drawing is to be read in conjunction with all other relevant design drawings.

c. O.S. data used for plans are printed under © Ordnance Survey Ireland Government of Ireland. All rights reserved. Licence Number 2022/OSI_NMA_180 National Transport Authority. All elevations are in metres and relate to OSI Geoid Model (OSGM15) Mean Head. All Co-ordinates are in Irish Transverse Mercator Grid (ITM) as defined by OSI active local GPS station.

d. Information concerning the position of apparatus shown on this drawing is based on drawings supplied by the utility owners and/or the utility works contractor, whilst every care has been taken in the preparation of this drawing, positions should be taken as approximate and are intended for general guidance only and no representation is made by the NTA as to the accuracy, completeness, sufficiency or otherwise of this drawing and the position of the apparatus. The information contained herein does not purport to be comprehensive or final as the apparatus is subject to being altered and/or superceded. Recipients should not rely on this information. Any liabilities are hereby expressly disclaimed.

e. The information contained herein has been provided by the NTA but does not purport to be comprehensive or final. Recipients should not rely on the information. Neither the NTA nor any of its directors, officers, employees, agents, stakeholders or advisers make any representation or warranty as to, or accept any liability or responsibility in relation to, the adequacy, accuracy, reasonableness or completeness of the information provided as part of this document or any matter on which the information is based (including but not limited to loss or damage arising as a result of reliance by recipients on the information or any part of it). Any liabilities are hereby expressly disclaimed.



Rev	Date	Drn	Chk'd	App'd	Description
M01	FEB 2023	DS	EE	SMG	ISSUED FOR PHASE 4: PLANNING

Client: **NTA**
Údarás Náisiúnta Iompair
National Transport Authority

Date: FEB 2023 | Scale: 1:500 @ A1, 1:1000 @ A3

Programme Code: BCIDD | Originator Code: ROT

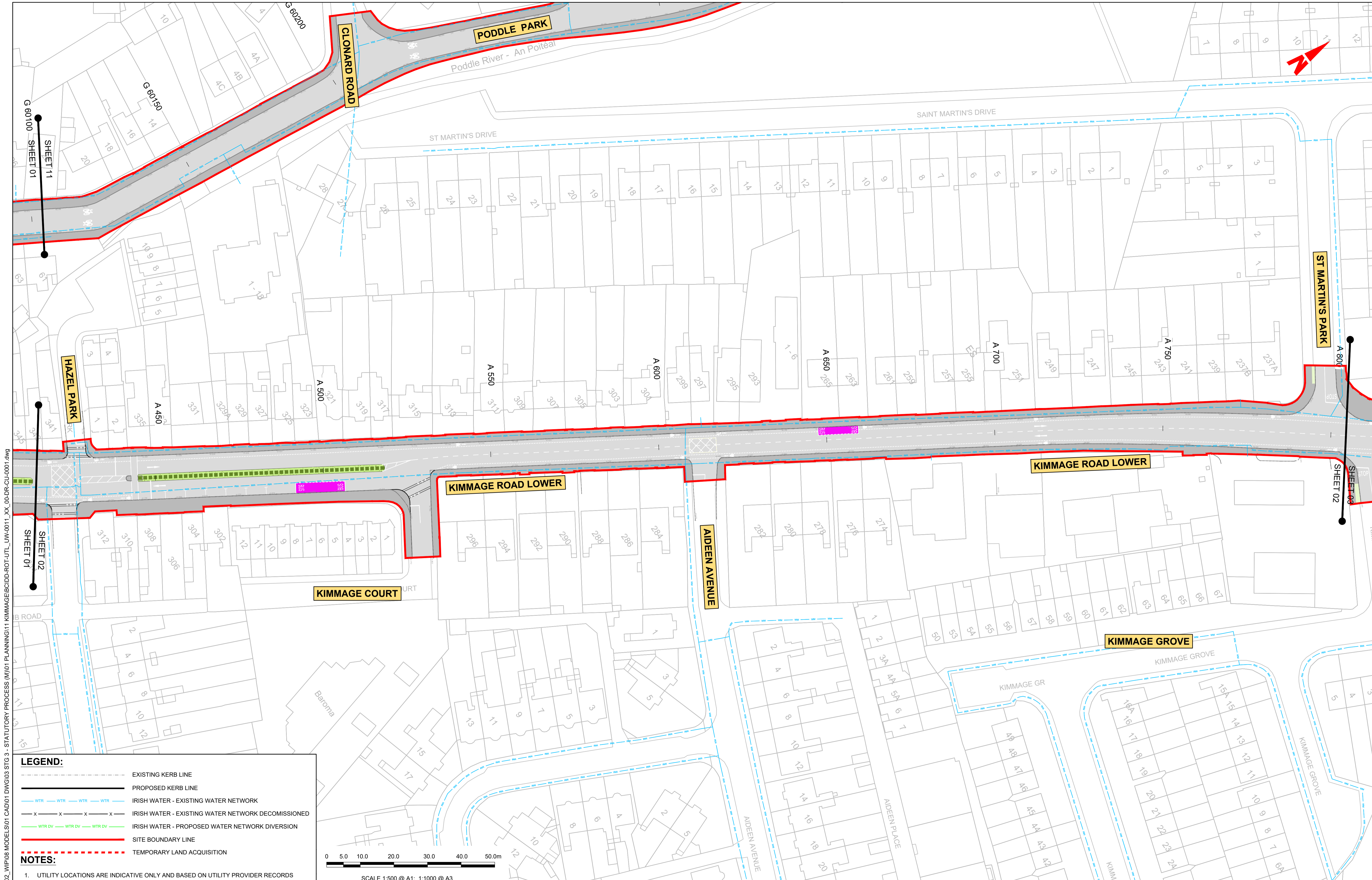
Engineering Designer: **CIROD** (TYPSA)

Drawn: DS | Checked: EE | Approved: SMG

QMS Code: []

Programme Title: BUSCONNECTS DUBLIN CORE BUS CORRIDORS INFRASTRUCTURE WORKS			
Drawing Title: KIMMAGE TO CITY CENTRE CORE BUS CORRIDOR SCHEME IW WATER ASSET ALTERATIONS			
Drawing File Name: BCIDD-ROT-UTL_UW-0011_XX_00-DR-CU-0001	Sheet Number: 01 of 14	Status: A	Rev: M01

DO NOT SCALE USE FIGURED DIMENSIONS ONLY

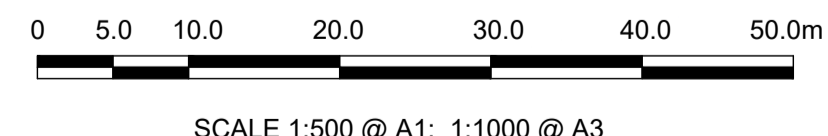


LEGEND:

- EXISTING KERB LINE
- PROPOSED KERB LINE
- IRISH WATER - EXISTING WATER NETWORK
- IRISH WATER - EXISTING WATER NETWORK DECOMMISSIONED
- IRISH WATER - PROPOSED WATER NETWORK DIVERSION
- SITE BOUNDARY LINE
- TEMPORARY LAND ACQUISITION

NOTES:

- UTILITY LOCATIONS ARE INDICATIVE ONLY AND BASED ON UTILITY PROVIDER RECORDS



W:\000000\19171717-02_WIP\08 MODELS\01 CAD\01 DWG\03 STG 3 - STATUTORY PROCESS (M)\01 PLANNING\11 KIMMAGE\BCIDD-ROT-UTL_UW-0011_XX_00-DR-CU-0001.dwg
 SHEET 11
 SHEET 01
 SHEET 02
 SHEET 01
 SHEET 02
 SHEET 03

Disclaimer

a. © National Transport Authority (NTA) 2022. This drawing is confidential and the copyright in it is owned by NTA. This drawing must not be either loaned, copied or otherwise reproduced in whole or in part or used for any purpose without the prior permission of NTA.

b. This drawing is to be used for the design element identified in the titleblock. Other information shown is to be considered indicative only. The drawing is to be read in conjunction with all other relevant design drawings.

c. O.S. data used for plans are printed under © Ordnance Survey Ireland Government of Ireland. All rights reserved. Licence Number 2022/OSI_NMA_180 National Transport Authority. All elevations are in metres and relate to OSI Geoid Model (OSGM15) Mean Head. All Co-ordinates are in Irish Transverse Mercator Grid (ITM) as defined by OSI active local GPS station.

d. Information concerning the position of apparatus shown on this drawing is based on drawings supplied by the utility owners and/or the utility works contractor, whilst every care has been taken in the preparation of this drawing, positions should be taken as approximate and are intended for general guidance only and no representation is made by the NTA as to the accuracy, completeness, sufficiency or otherwise of this drawing and the position of the apparatus. The information contained herein does not purport to be comprehensive or final as the apparatus is subject to being altered and/or superceded. Recipients should not rely on this information. Any liabilities are hereby expressly disclaimed.

e. The information contained herein has been provided by the NTA but does not purport to be comprehensive or final. Recipients should not rely on the information. Neither the NTA nor any of its directors, officers, employees, agents, stakeholders or advisers make any representation or warranty as to, or accept any liability or responsibility in relation to, the adequacy, accuracy, reasonableness or completeness of the information provided as part of this document or any matter on which the information is based (including but not limited to loss or damage arising as a result of reliance by recipients on the information or any part of it). Any liabilities are hereby expressly disclaimed.



Rev	Date	Drn	Chk'd	App'd	Description
M01	FEB 2023	DS	EE	SMG	ISSUED FOR PHASE 4: PLANNING

Client

Engineering Designer

Programme Title
**BUSCONNECTS DUBLIN
CORE BUS CORRIDORS INFRASTRUCTURE WORKS**

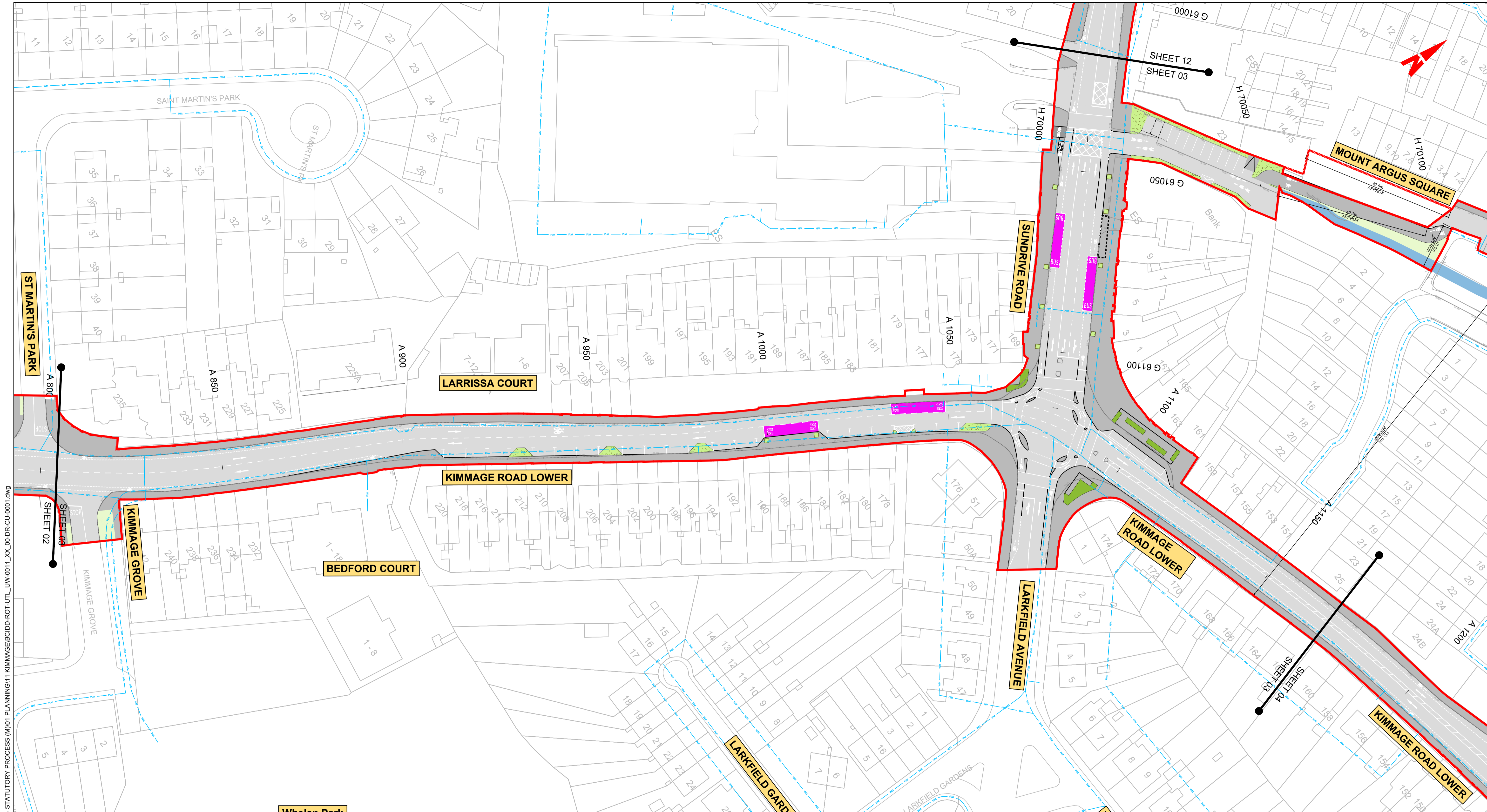
Drawing Title
KIMMAGE TO CITY CENTRE CORE BUS CORRIDOR SCHEME
IW WATER ASSET ALTERATIONS

Date	Scale	Drawn	Checked	Approved
FEB 2023	1:500 @ A1 1:1000 @ A3	DS	EE	SMG

Programme Code	Originator Code	QMS Code
BCIDD	ROT	

Drawing File Name	Sheet Number	Status	Rev
BCIDD-ROT-UTL_UW-0011_XX_00-DR-CU-0002	02 of 14	A	M01

DO NOT SCALE USE FIGURED DIMENSIONS ONLY

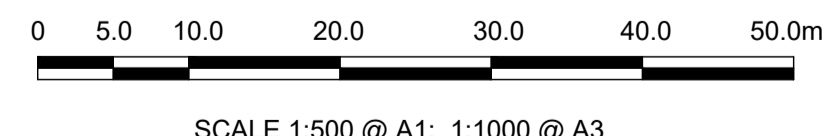


LEGEND:

- EXISTING KERB LINE
- PROPOSED KERB LINE
- IRISH WATER - EXISTING WATER NETWORK
- IRISH WATER - EXISTING WATER NETWORK DECOMMISSIONED
- IRISH WATER - PROPOSED WATER NETWORK DIVERSION
- SITE BOUNDARY LINE
- TEMPORARY LAND ACQUISITION

NOTES:

- UTILITY LOCATIONS ARE INDICATIVE ONLY AND BASED ON UTILITY PROVIDER RECORDS



Disclaimer

a. © National Transport Authority (NTA) 2022. This drawing is confidential and the copyright in it is owned by NTA. This drawing must not be either loaned, copied or otherwise reproduced in whole or in part or used for any purpose without the prior permission of NTA.

b. This drawing is to be used for the design element identified in the titleblock. Other information shown is to be considered indicative only. The drawing is to be read in conjunction with all other relevant design drawings.

c. O.S. data used for plans are printed under © Ordnance Survey Ireland Government of Ireland. All rights reserved. Licence Number 2022/OSI_NMA_180 National Transport Authority. All elevations are in metres and relate to OSI Geoid Model (OSGM15) Mean Head. All Co-ordinates are in Irish Transverse Mercator Grid (ITM) as defined by OSI active local GPS station.

d. Information concerning the position of apparatus shown on this drawing is based on drawings supplied by the utility owners and/or the utility works contractor, whilst every care has been taken in the preparation of this drawing, positions should be taken as approximate and are intended for general guidance only and no representation is made by the NTA as to the accuracy, completeness, sufficiency or otherwise of this drawing and the position of the apparatus. The information contained herein does not purport to be comprehensive or final as the apparatus is subject to being altered and/or superseded. Recipients should not rely on this information. Any liabilities are hereby expressly disclaimed.

e. The information contained herein has been provided by the NTA but does not purport to be comprehensive or final. Recipients should not rely on the information. Neither the NTA nor any of its directors, officers, employees, agents, stakeholders or advisers make any representation or warranty as to, or accept any liability or responsibility in relation to, the adequacy, accuracy, reasonableness or completeness of the information provided as part of this document or any matter on which the information is based (including but not limited to loss or damage arising as a result of reliance by recipients on the information or any part of it). Any liabilities are hereby expressly disclaimed.



Rev	Date	Drn	Chk'd	App'd	Description
M01	FEB 2023	DS	EE	SMG	ISSUED FOR PHASE 4: PLANNING

Client: **NTA**
Udarás Náisiúnta Iompair
National Transport Authority

Engineering Designer: **CIROD**
TYPSA

Date: FEB 2023
Scale: 1:500 @ A1
1:1000 @ A3

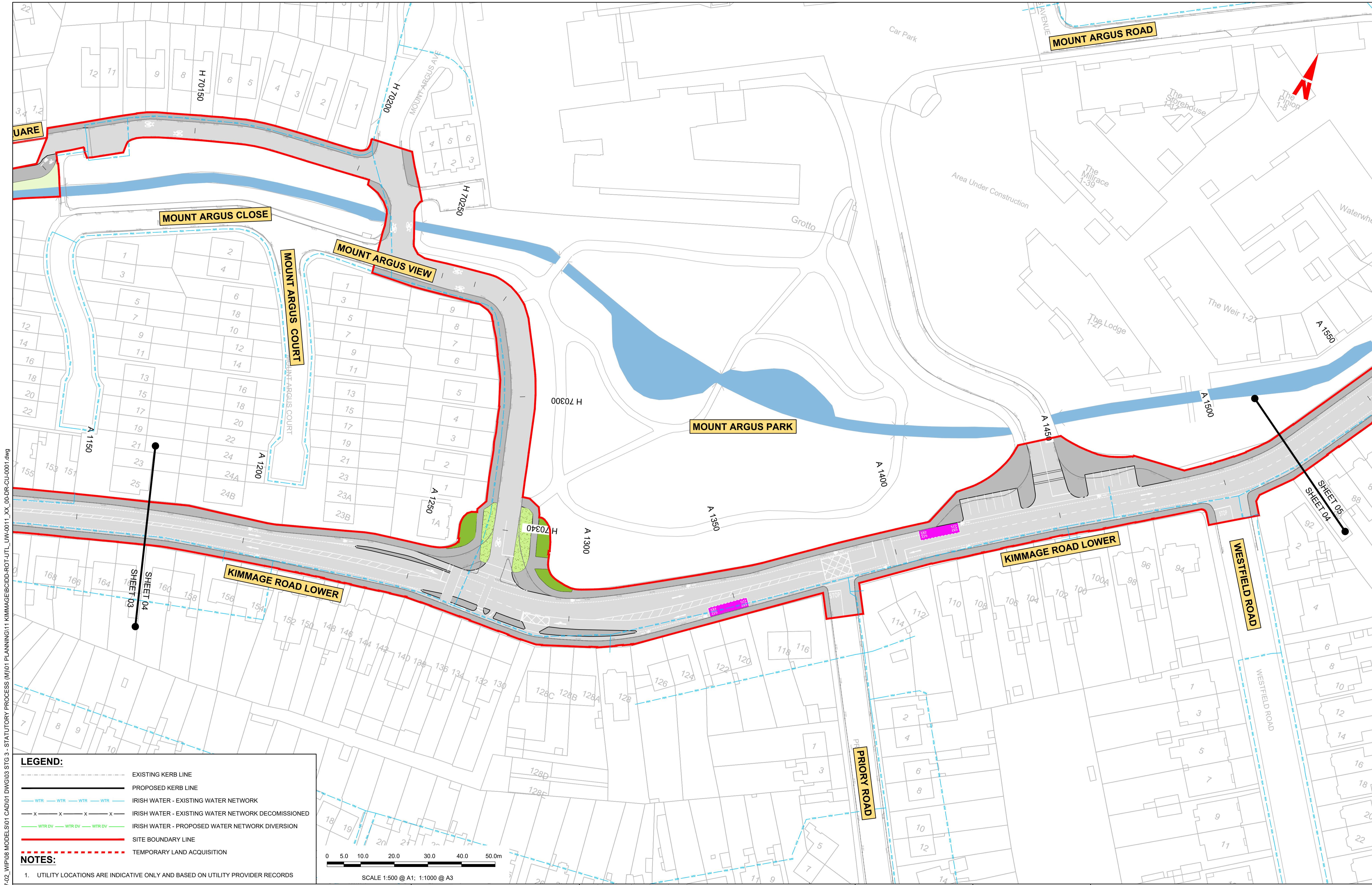
Programme Code: BCIDD
Originator Code: ROT

Drawn: DS
Checked: EE
Approved: SMG

Programme Title: BUSCONNECTS DUBLIN CORE BUS CORRIDORS INFRASTRUCTURE WORKS			
Drawing Title: KIMMAGE TO CITY CENTRE CORE BUS CORRIDOR SCHEME IW WATER ASSET ALTERATIONS			
Drawing File Name: BCIDD-ROT-UTL_UW-0011_XX_00-DR-CU-0003	Sheet Number: 03 of 14	Status: A	Rev: M01

DO NOT SCALE USE FIGURED DIMENSIONS ONLY

\\produbp1\U201917\1717-02_WIP\08 MODELS\01 CAD\01 PLANNING\11 KIMMAGE\BCIDD-ROT-UTL_UW-0011_XX_00-DR-CU-0001.dwg

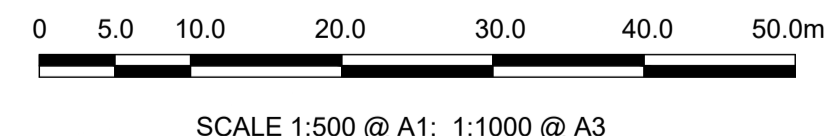


LEGEND:

- EXISTING KERB LINE
- PROPOSED KERB LINE
- IRISH WATER - EXISTING WATER NETWORK
- IRISH WATER - EXISTING WATER NETWORK DECOMMISSIONED
- IRISH WATER - PROPOSED WATER NETWORK DIVERSION
- SITE BOUNDARY LINE
- TEMPORARY LAND ACQUISITION

NOTES:

- UTILITY LOCATIONS ARE INDICATIVE ONLY AND BASED ON UTILITY PROVIDER RECORDS



W:\000000\117-02-WIP\08 MODELS\01 CAD\01 DWG\03 STG 3 - STATUTORY PROCESS (M)\01 PLANNING\11 KIMMAGE\BCIDD-ROT-UTL_UW-0011_XX_00-DR-CU-0001.dwg
 W:\000000\117-02-WIP\08 MODELS\01 CAD\01 DWG\03 STG 3 - STATUTORY PROCESS (M)\01 PLANNING\11 KIMMAGE\BCIDD-ROT-UTL_UW-0011_XX_00-DR-CU-0001.dwg

Disclaimer

a. © National Transport Authority (NTA) 2022. This drawing is confidential and the copyright in it is owned by NTA. This drawing must not be either loaned, copied or otherwise reproduced in whole or in part or used for any purpose without the prior permission of NTA.

b. This drawing is to be used for the design element identified in the title block. Other information shown is to be considered indicative only. The drawing is to be read in conjunction with all other relevant design drawings.

c. O.S. data used for plans are printed under © Ordnance Survey Ireland Government of Ireland. All rights reserved. Licence Number 2022/OSI_NMA_180 National Transport Authority. All elevations are in metres and relate to OSI Geoid Model (OSGM15) Mean Head. All Co-ordinates are in Irish Transverse Mercator Grid (ITM) as defined by OSI active local GPS station.

d. Information concerning the position of apparatus shown on this drawing is based on drawings supplied by the utility owners and/or the utility works contractor, whilst every care has been taken in the preparation of this drawing, positions should be taken as approximate and are intended for general guidance only and no representation is made by the NTA as to the accuracy, completeness, sufficiency or otherwise of this drawing and the position of the apparatus. The information contained herein does not purport to be comprehensive or final as the apparatus is subject to being altered and/or superceded. Recipients should not rely on this information. Any liabilities are hereby expressly disclaimed.

e. The information contained herein has been provided by the NTA but does not purport to be comprehensive or final. Recipients should not rely on the information. Neither the NTA nor any of its directors, officers, employees, agents, stakeholders or advisers make any representation or warranty as to, or accept any liability or responsibility in relation to, the adequacy, accuracy, reasonableness or completeness of the information provided as part of this document or any matter on which the information is based (including but not limited to loss or damage arising as a result of reliance by recipients on the information or any part of it). Any liabilities are hereby expressly disclaimed.



Rev	Date	Drn	Chk'd	App'd	Description
M01	FEB 2023	DS	EE	SMG	ISSUED FOR PHASE 4: PLANNING

Client: **NTA**
Údarás Náisiúnta Iompair
National Transport Authority

Date: FEB 2023
Scale: 1:500 @ A1
1:1000 @ A3

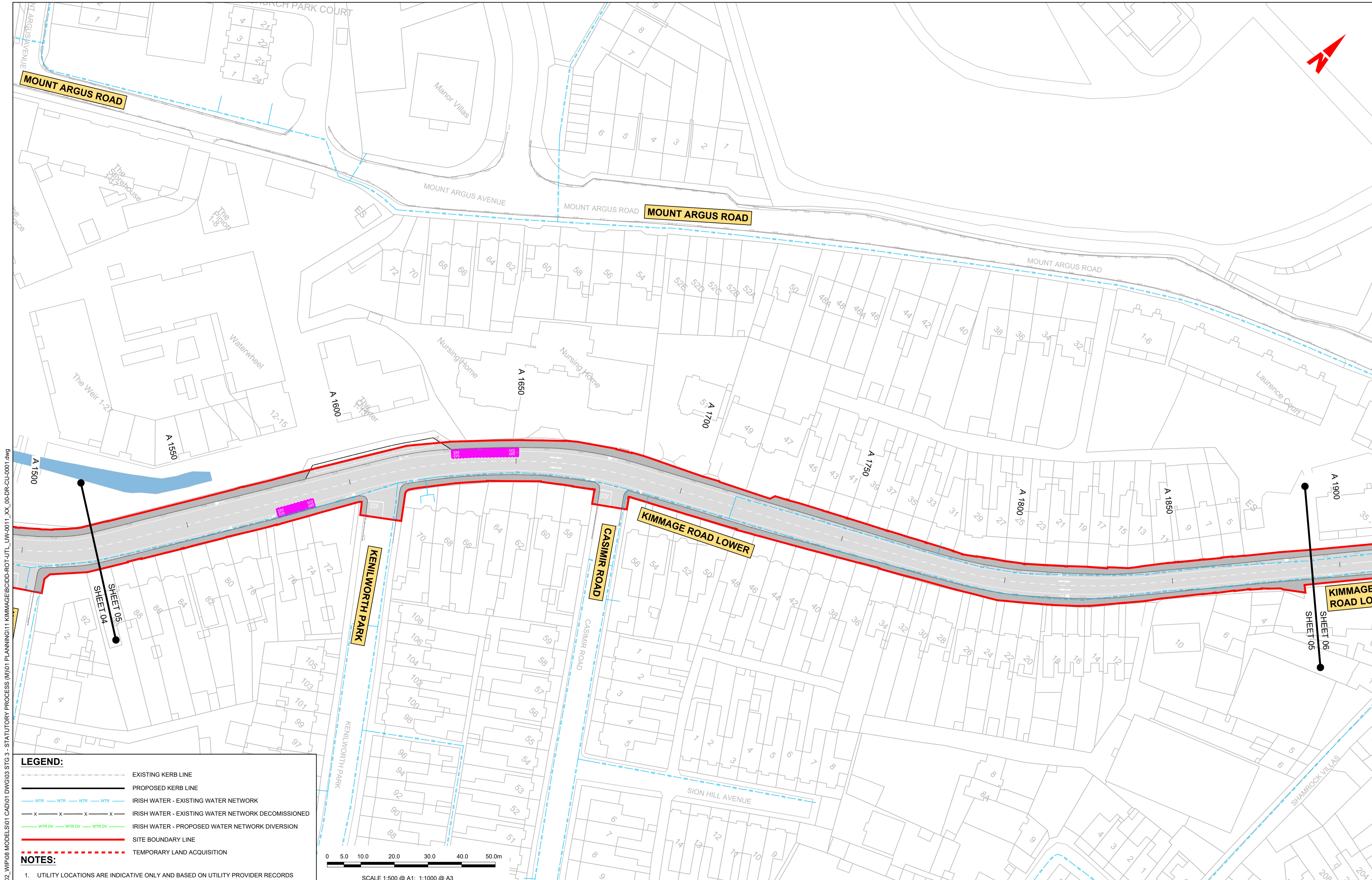
Engineering Designer: **CIROD**
TYPSA

Drawn: DS
Checked: EE
Approved: SMG

Programme Code: BCIDD
Originator Code: ROT
QMS Code:

Programme Title: BUSCONNECTS DUBLIN CORE BUS CORRIDORS INFRASTRUCTURE WORKS			
Drawing Title: KIMMAGE TO CITY CENTRE CORE BUS CORRIDOR SCHEME IW WATER ASSET ALTERATIONS			
Drawing File Name: BCIDD-ROT-UTL_UW-0011_XX_00-DR-CU-0004	Sheet Number: 04 of 14	Status: A	Rev: M01

DO NOT SCALE USE FIGURED DIMENSIONS ONLY

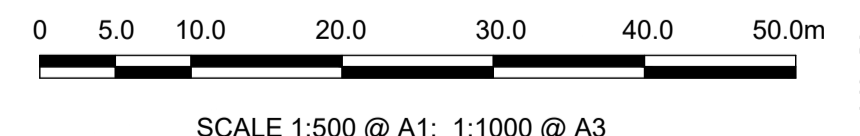


LEGEND:

- EXISTING KERB LINE
- PROPOSED KERB LINE
- IRISH WATER - EXISTING WATER NETWORK
- IRISH WATER - EXISTING WATER NETWORK DECOMMISSIONED
- IRISH WATER - PROPOSED WATER NETWORK DIVERSION
- SITE BOUNDARY LINE
- TEMPORARY LAND ACQUISITION

NOTES:

- UTILITY LOCATIONS ARE INDICATIVE ONLY AND BASED ON UTILITY PROVIDER RECORDS



\\rodubp1\j2019\1917119117-02_WIP\08 MODELS\01 CAD\01 PLANNING\11 KIMMAGE\BCIDD-ROT-UTL_UW-0011_XX_00-DR-CU-0001.dwg

Disclaimer

a. © National Transport Authority (NTA) 2022. This drawing is confidential and the copyright in it is owned by NTA. This drawing must not be either loaned, copied or otherwise reproduced in whole or in part or used for any purpose without the prior permission of NTA.

b. This drawing is to be used for the design element identified in the titleblock. Other information shown is to be considered indicative only. The drawing is to be read in conjunction with all other relevant design drawings.

c. O.S. data used for plans are printed under © Ordnance Survey Ireland Government of Ireland. All rights reserved. Licence Number 2022/OSI_NMA_180 National Transport Authority. All elevations are in metres and relate to OSI Geoid Model (OSGM15) Mean Head. All Co-ordinates are in Irish Transverse Mercator Grid (ITM) as defined by OSI active local GPS station.

d. Information concerning the position of apparatus shown on this drawing is based on drawings supplied by the utility owners and/or the utility works contractor, whilst every care has been taken in the preparation of this drawing, positions should be taken as approximate and are intended for general guidance only and no representation is made by the NTA as to the accuracy, completeness, sufficiency or otherwise of this drawing and the position of the apparatus. The information contained herein does not purport to be comprehensive or final as the apparatus is subject to being altered and/or superseded. Recipients should not rely on this information. Any liabilities are hereby expressly disclaimed.

e. The information contained herein has been provided by the NTA but does not purport to be comprehensive or final. Recipients should not rely on the information. Neither the NTA nor any of its directors, officers, employees, agents, stakeholders or advisers make any representation or warranty as to, or accept any liability or responsibility in relation to, the adequacy, accuracy, reasonableness or completeness of the information provided as part of this document or any matter on which the information is based (including but not limited to loss or damage arising as a result of reliance by recipients on the information or any part of it). Any liabilities are hereby expressly disclaimed.



Rev	Date	Drn	Chk'd	App'd	Description
M01	FEB 2023	DS	EE	SMG	ISSUED FOR PHASE 4: PLANNING

Client: **NTA**
Udarás Náisiúnta Iompair
National Transport Authority

Engineering Designer: **CIROD**
TYPSA

Date: FEB 2023
Scale: 1:500 @ A1
1:1000 @ A3

Drawn: DS
Checked: EE
Approved: SMG

Programme Code: BCIDD
Originator Code: ROT

QMS Code:

Programme Title: **BUSCONNECTS DUBLIN
CORE BUS CORRIDORS INFRASTRUCTURE WORKS**

Drawing Title: **KIMMAGE TO CITY CENTRE CORE BUS CORRIDOR SCHEME
IW WATER ASSET ALTERATIONS**

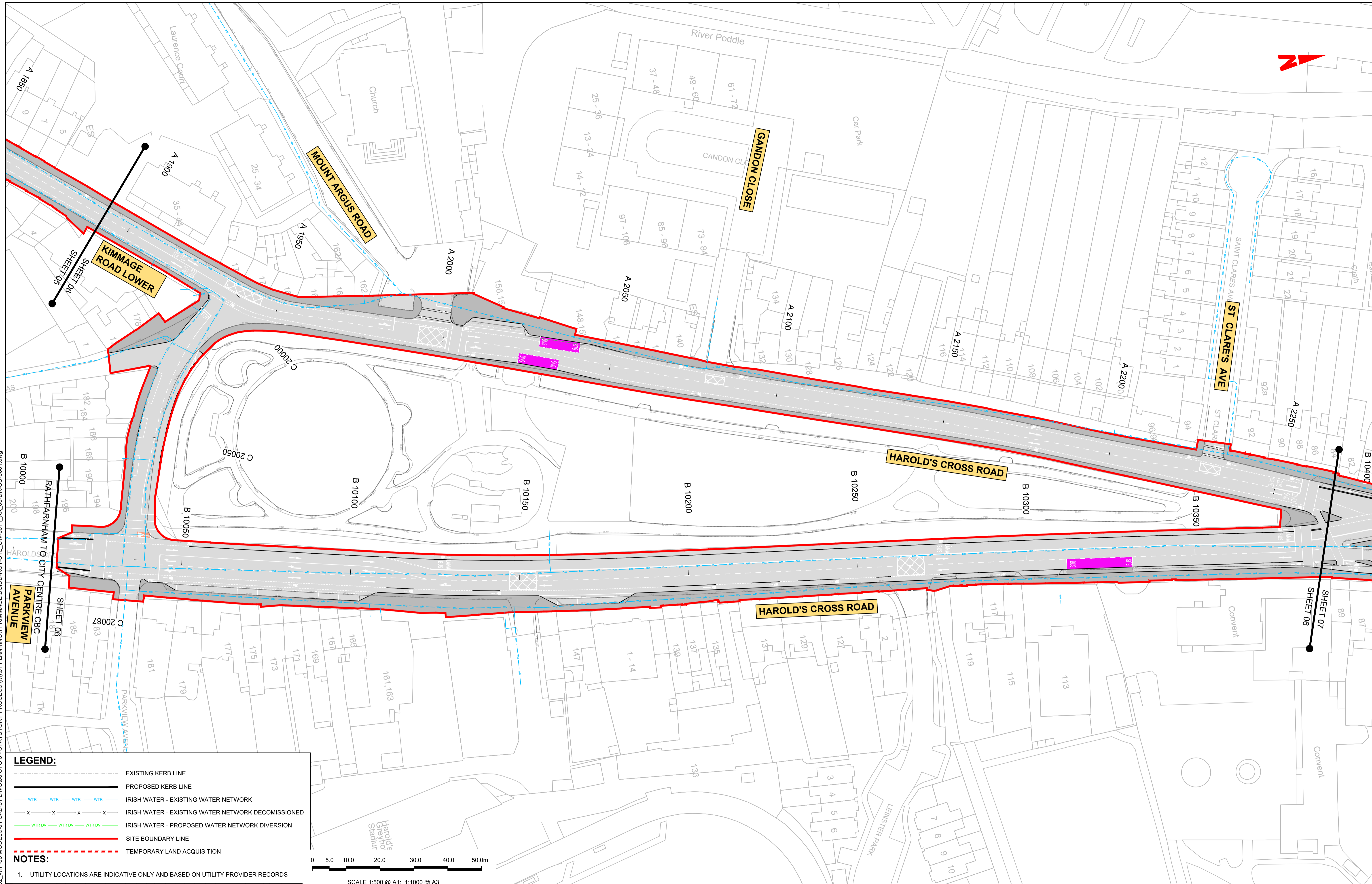
Drawing File Name: BCIDD-ROT-UTL_UW-0011_XX_00-DR-CU-0005

Sheet Number: 05 of 14

Status: A

Rev: M01

DO NOT SCALE USE FIGURED DIMENSIONS ONLY

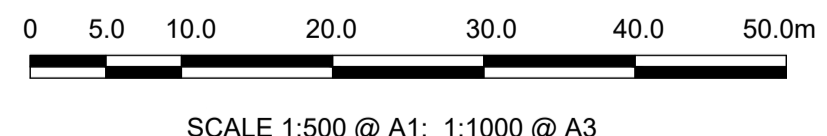


LEGEND:

- EXISTING KERB LINE
- PROPOSED KERB LINE
- IRISH WATER - EXISTING WATER NETWORK
- IRISH WATER - EXISTING WATER NETWORK DECOMMISSIONED
- IRISH WATER - PROPOSED WATER NETWORK DIVERSION
- SITE BOUNDARY LINE
- TEMPORARY LAND ACQUISITION

NOTES:

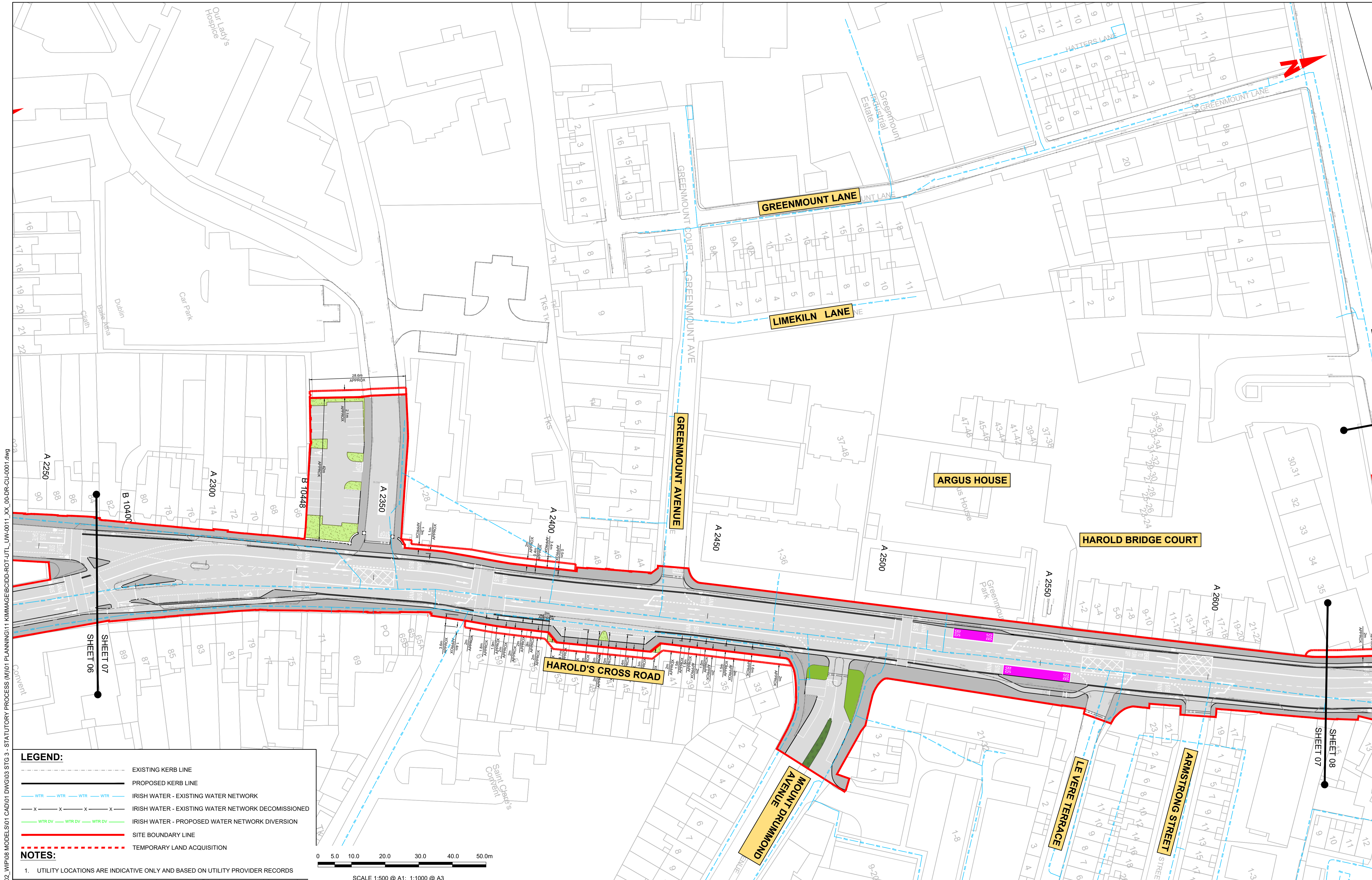
- UTILITY LOCATIONS ARE INDICATIVE ONLY AND BASED ON UTILITY PROVIDER RECORDS



<p>Scale: 1:500 @ A1; 1:1000 @ A3</p>				<p>Rev M01 Date FEB 2023 Dm DS Chk'd EE App'd SMG Description ISSUED FOR PHASE 4: PLANNING</p>		<p>Client NTA Údarás Náisiúnta Iompair National Transport Authority</p>		<p>Engineering Designer FIROD TYPSA</p>			<p>Programme Title BUSCONNECTS DUBLIN CORE BUS CORRIDORS INFRASTRUCTURE WORKS</p>		
<p>Date FEB 2023 Scale 1:500 @ A1 1:1000 @ A3</p>		<p>Drawn DS Checked EE Approved SMG</p>		<p>Programme Code BCIDD Originator Code ROT</p>		<p>QMS Code</p>			<p>Drawing Title KIMMAGE TO CITY CENTRE CORE BUS CORRIDOR SCHEME IW WATER ASSET ALTERATIONS</p>				
<p>Drawing File Name BCIDD-ROT-UTL_UW-0011_XX_00-DR-CU-0006</p>		<p>Sheet Number 06 of 14</p>		<p>Status A</p>		<p>Rev M01</p>							

DO NOT SCALE USE FIGURED DIMENSIONS ONLY

\\wddubhp1\j2019\1911719117-02_WIP\08 MODELS\01 CAD\01 PLANNING\11 KIMMAGE\BCIDD-ROT-UTL_UW-0011_XX_00-DR-CU-0001.dwg

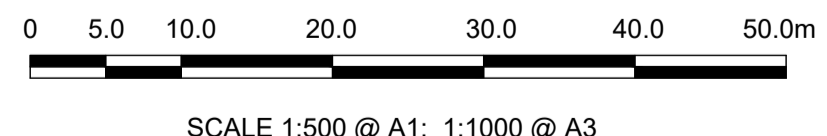


LEGEND:

- EXISTING KERB LINE
- PROPOSED KERB LINE
- IRISH WATER - EXISTING WATER NETWORK
- IRISH WATER - EXISTING WATER NETWORK DECOMMISSIONED
- IRISH WATER - PROPOSED WATER NETWORK DIVERSION
- SITE BOUNDARY LINE
- TEMPORARY LAND ACQUISITION

NOTES:

- UTILITY LOCATIONS ARE INDICATIVE ONLY AND BASED ON UTILITY PROVIDER RECORDS



W:\000000\19117-02_WIP\08 MODELS\01 CAD\01 PLANNING\11 KIMMAGE\BCIDD-ROT-UTL_UW-0011_XX_00-DR-CU-0001.dwg

Disclaimer

a. © National Transport Authority (NTA) 2022. This drawing is confidential and the copyright in it is owned by NTA. This drawing must not be either loaned, copied or otherwise reproduced in whole or in part or used for any purpose without the prior permission of NTA.

b. This drawing is to be used for the design element identified in the titlebox. Other information shown is to be considered indicative only. The drawing is to be read in conjunction with all other relevant design drawings.

c. O.S. data used for plans are printed under © Ordnance Survey Ireland Government of Ireland. All rights reserved. Licence Number 2022/OSI_NMA_180 National Transport Authority. All elevations are in metres and relate to OSI Geoid Model (OSGM15) Mean Head. All Co-ordinates are in Irish Transverse Mercator Grid (ITM) as defined by OSI active local GPS station.

d. Information concerning the position of apparatus shown on this drawing is based on drawings supplied by the utility owners and/or the utility works contractor, whilst every care has been taken in the preparation of this drawing, positions should be taken as approximate and are intended for general guidance only and no representation is made by the NTA as to the accuracy, completeness, sufficiency or otherwise of this drawing and the position of the apparatus. The information contained herein does not purport to be comprehensive or final as the apparatus is subject to being altered and/or superceded. Recipients should not rely on this information. Any liabilities are hereby expressly disclaimed.

e. The information contained herein has been provided by the NTA but does not purport to be comprehensive or final. Recipients should not rely on the information. Neither the NTA nor any of its directors, officers, employees, agents, stakeholders or advisers make any representation or warranty as to, or accept any liability or responsibility in relation to, the adequacy, accuracy, reasonableness or completeness of the information provided as part of this document or any matter on which the information is based (including but not limited to loss or damage arising as a result of reliance by recipients on the information or any part of it). Any liabilities are hereby expressly disclaimed.



Rev	Date	Drn	Chk'd	App'd	Description
M01	FEB 2023	DS	EE	SMG	ISSUED FOR PHASE 4: PLANNING

Client: **NTA**
Údarás Náisiúnta Iompair
National Transport Authority

Engineering Designer: **CIROD**
TYPSA

Date: FEB 2023
Scale: 1:500 @ A1, 1:1000 @ A3

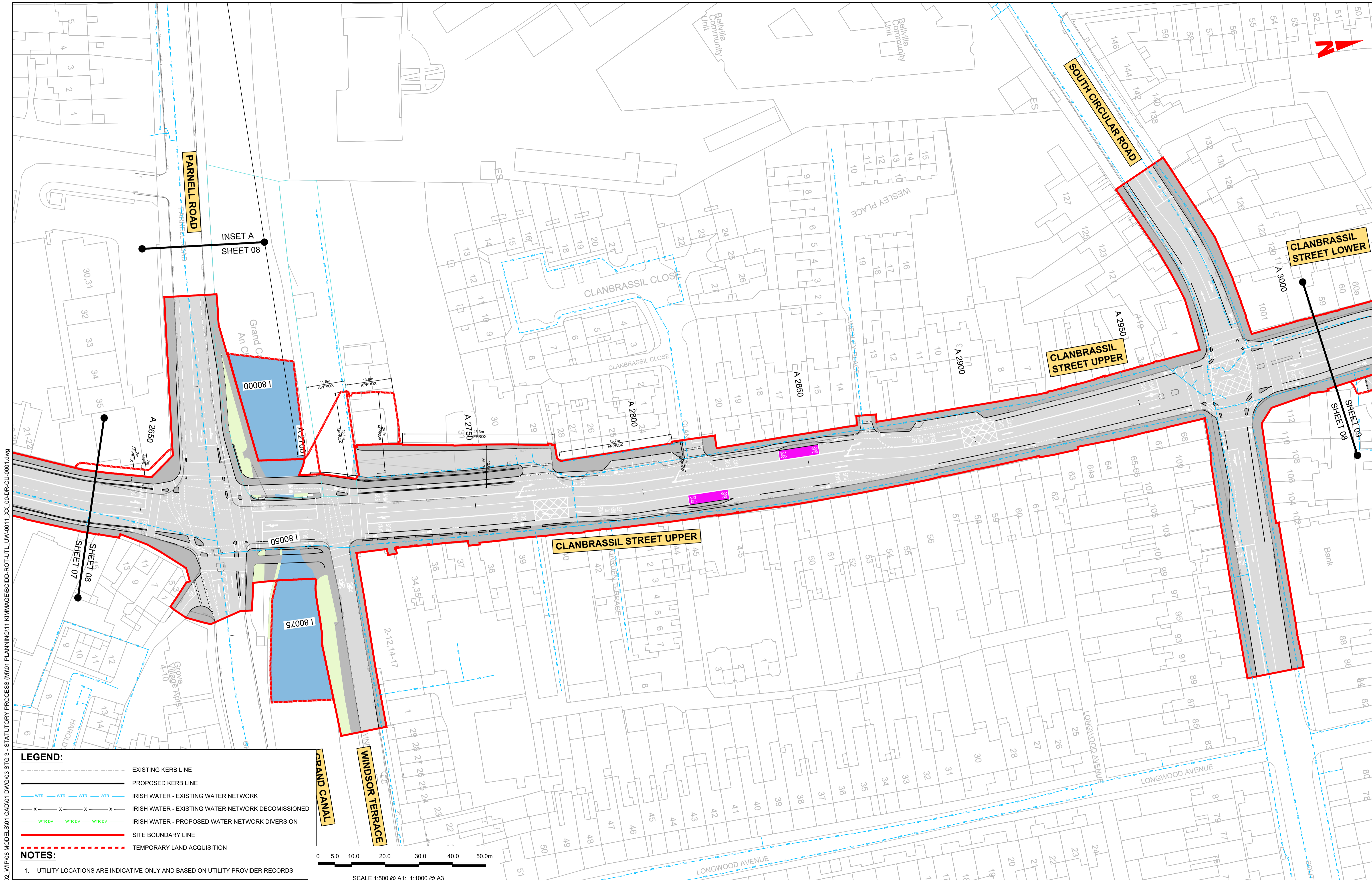
Drawn: DS
Checked: EE
Approved: SMG

Programme Code: BCIDD
Originator Code: ROT

QMS Code:

Programme Title: BUSCONNECTS DUBLIN CORE BUS CORRIDORS INFRASTRUCTURE WORKS			
Drawing Title: KIMMAGE TO CITY CENTRE CORE BUS CORRIDOR SCHEME IW WATER ASSET ALTERATIONS			
Drawing File Name: BCIDD-ROT-UTL_UW-0011_XX_00-DR-CU-0007	Sheet Number: 07 of 14	Status: A	Rev: M01

DO NOT SCALE USE FIGURED DIMENSIONS ONLY



- LEGEND:**
- EXISTING KERB LINE
 - PROPOSED KERB LINE
 - IRISH WATER - EXISTING WATER NETWORK
 - IRISH WATER - EXISTING WATER NETWORK DECOMMISSIONED
 - IRISH WATER - PROPOSED WATER NETWORK DIVERSION
 - SITE BOUNDARY LINE
 - TEMPORARY LAND ACQUISITION

NOTES:

- UTILITY LOCATIONS ARE INDICATIVE ONLY AND BASED ON UTILITY PROVIDER RECORDS

Disclaimer:

a. © National Transport Authority (NTA) 2022. This drawing is confidential and the copyright in it is owned by NTA. This drawing must not be either loaned, copied or otherwise reproduced in whole or in part or used for any purpose without the prior permission of NTA.

b. This drawing is to be used for the design element identified in the titlebox. Other information shown is to be considered indicative only. The drawing is to be read in conjunction with all other relevant design drawings.

c. O.S. data used for plans are printed under © Ordnance Survey Ireland Government of Ireland. All rights reserved. Licence Number 2022/OSI_NMA_180 National Transport Authority. All elevations are in metres and relate to OSI Geoid Model (OSGM15) Mean Head. All Co-ordinates are in Irish Transverse Mercator Grid (ITM) as defined by OSI active local GPS station.

d. Information concerning the position of apparatus shown on this drawing is based on drawings supplied by the utility owners and/or the utility works contractor, whilst every care has been taken in the preparation of this drawing, positions should be taken as approximate and are intended for general guidance only and no representation is made by the NTA as to the accuracy, completeness, sufficiency or otherwise of this drawing and the position of the apparatus. The information contained herein does not purport to be comprehensive or final as the apparatus is subject to being altered and/or superceded. Recipients should not rely on this information. Any liabilities are hereby expressly disclaimed.

e. The information contained herein has been provided by the NTA but does not purport to be comprehensive or final. Recipients should not rely on the information. Neither the NTA nor any of its directors, officers, employees, agents, stakeholders or advisers make any representation or warranty as to, or accept any liability or responsibility in relation to, the adequacy, accuracy, reasonableness or completeness of the information provided as part of this document or any matter on which the information is based (including but not limited to loss or damage arising as a result of reliance by recipients on the information or any part of it). Any liabilities are hereby expressly disclaimed.

SCALE 1:500 @ A1; 1:1000 @ A3

Project Ireland 2040
Building Ireland's Future

Rev	Date	Drn	Chk'd	App'd	Description
M01	FEB 2023	DS	EE	SMG	ISSUED FOR PHASE 4: PLANNING

Client: **NTA**
Údarás Náisiúnta Iompair
National Transport Authority

Date: FEB 2023
Scale: 1:500 @ A1
1:1000 @ A3

Engineering Designer: **CIROD**
TYPSA

Drawn: DS
Checked: EE
Approved: SMG

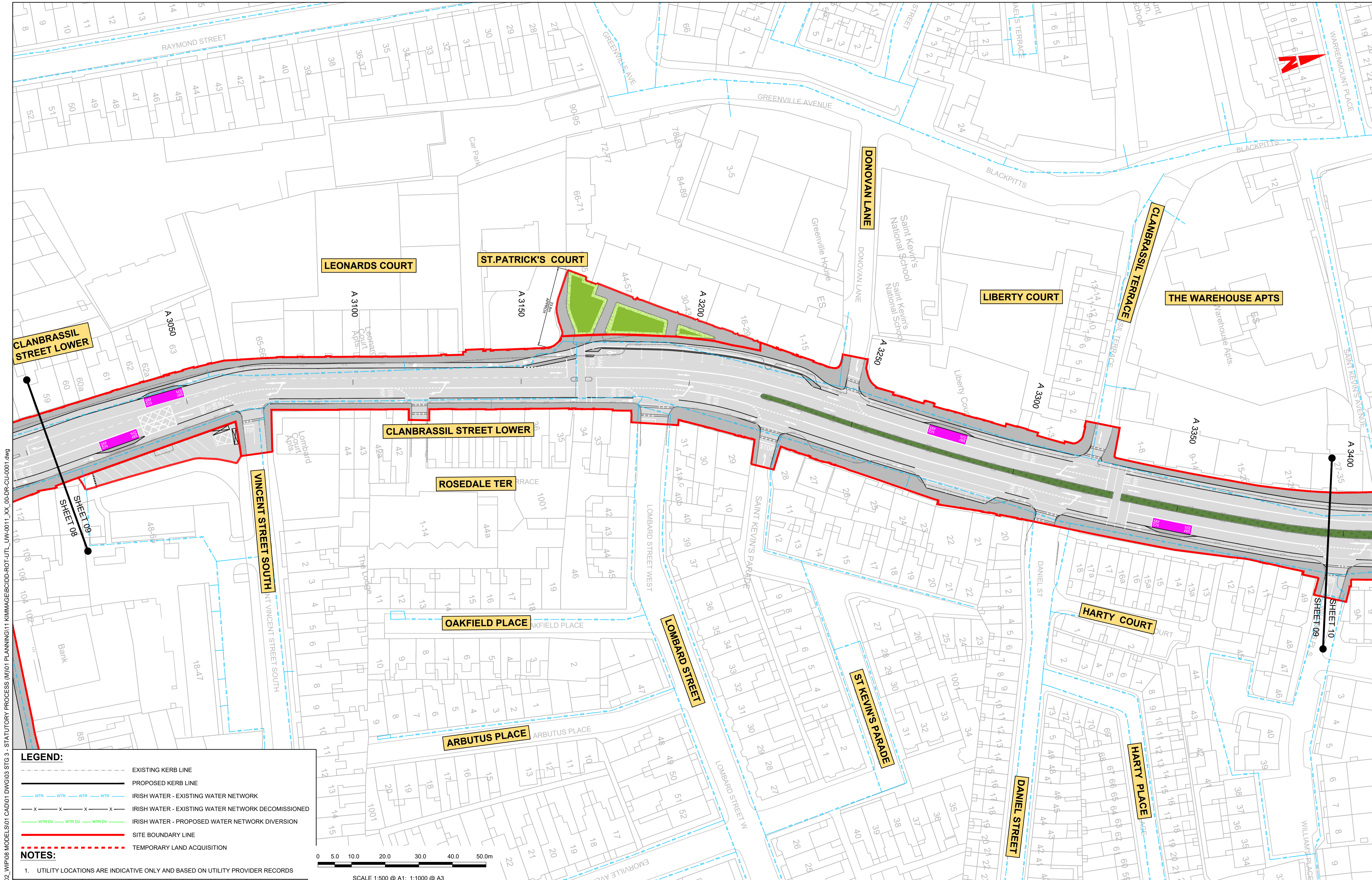
Programme Title: **BUSCONNECTS DUBLIN**
CORE BUS CORRIDORS INFRASTRUCTURE WORKS

Drawing Title: KIMMAGE TO CITY CENTRE CORE BUS CORRIDOR SCHEME
IW WATER ASSET ALTERATIONS

Drawing File Name: BCIDD-ROT-UTL_UW-0011_XX_00-DR-CU-0008
Sheet Number: 08 of 14
Status: A
Rev: M01

DO NOT SCALE USE FIGURED DIMENSIONS ONLY

\\odubp1\j2019\19117-02_WIP08 MODELS\01 CAD\01 PLANNING\11 KIMMAGE\BCIDD-ROT-UTL_UW-0011_XX_00-DR-CU-0001.dwg

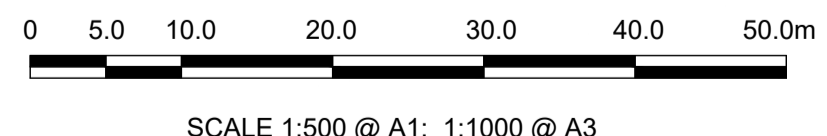


LEGEND:

- EXISTING KERB LINE
- PROPOSED KERB LINE
- IRISH WATER - EXISTING WATER NETWORK
- IRISH WATER - EXISTING WATER NETWORK DECOMMISSIONED
- IRISH WATER - PROPOSED WATER NETWORK DIVERSION
- SITE BOUNDARY LINE
- TEMPORARY LAND ACQUISITION

NOTES:

- UTILITY LOCATIONS ARE INDICATIVE ONLY AND BASED ON UTILITY PROVIDER RECORDS



\\odubp1u20191917117-02_WIP08 MODELS01 CAD01 DWG003 STG 3 - STATUTORY PROCESS (M)01 PLANNING11 KIMMAGEBCIDD-ROT-UTL_UW-0011_XX_00-DR-CU-0001.dwg

Disclaimer

a. © National Transport Authority (NTA) 2022. This drawing is confidential and the copyright in it is owned by NTA. This drawing must not be either loaned, copied or otherwise reproduced in whole or in part or used for any purpose without the prior permission of NTA.

b. This drawing is to be used for the design element identified in the titlebox. Other information shown is to be considered indicative only. The drawing is to be read in conjunction with all other relevant design drawings.

c. D.S. data used for plans are printed under © Ordnance Survey Ireland Government of Ireland. All rights reserved. Licence Number 2022/OSI_NMA_180 National Transport Authority. All elevations are in metres and relate to OSI Geoid Model (OSGM15) Mean Head. All Co-ordinates are in Irish Transverse Mercator Grid (ITM) as defined by OSI active local GPS station.

d. Information concerning the position of apparatus shown on this drawing is based on drawings supplied by the utility owners and/or the utility works contractor, whilst every care has been taken in the preparation of this drawing, positions should be taken as approximate and are intended for general guidance only and no representation is made by the NTA as to the accuracy, completeness, sufficiency or otherwise of this drawing and the position of the apparatus. The information contained herein does not purport to be comprehensive or final as the apparatus is subject to being altered and/or superceded. Recipients should not rely on this information. Any liabilities are hereby expressly disclaimed.

e. The information contained herein has been provided by the NTA but does not purport to be comprehensive or final. Recipients should not rely on the information. Neither the NTA nor any of its directors, officers, employees, agents, stakeholders or advisers make any representation or warranty as to, or accept any liability or responsibility in relation to, the adequacy, accuracy, reasonableness or completeness of the information provided as part of this document or any matter on which the information is based (including but not limited to loss or damage arising as a result of reliance by recipients on the information or any part of it). Any liabilities are hereby expressly disclaimed.



Rev	Date	Drn	Chk'd	App'd	Description
M01	FEB 2023	DS	EE	SMG	ISSUED FOR PHASE 4: PLANNING

Client: **NTA**
Údarás Náisiúnta Iompair
National Transport Authority

Engineering Designer: **PROD**
TYPSA

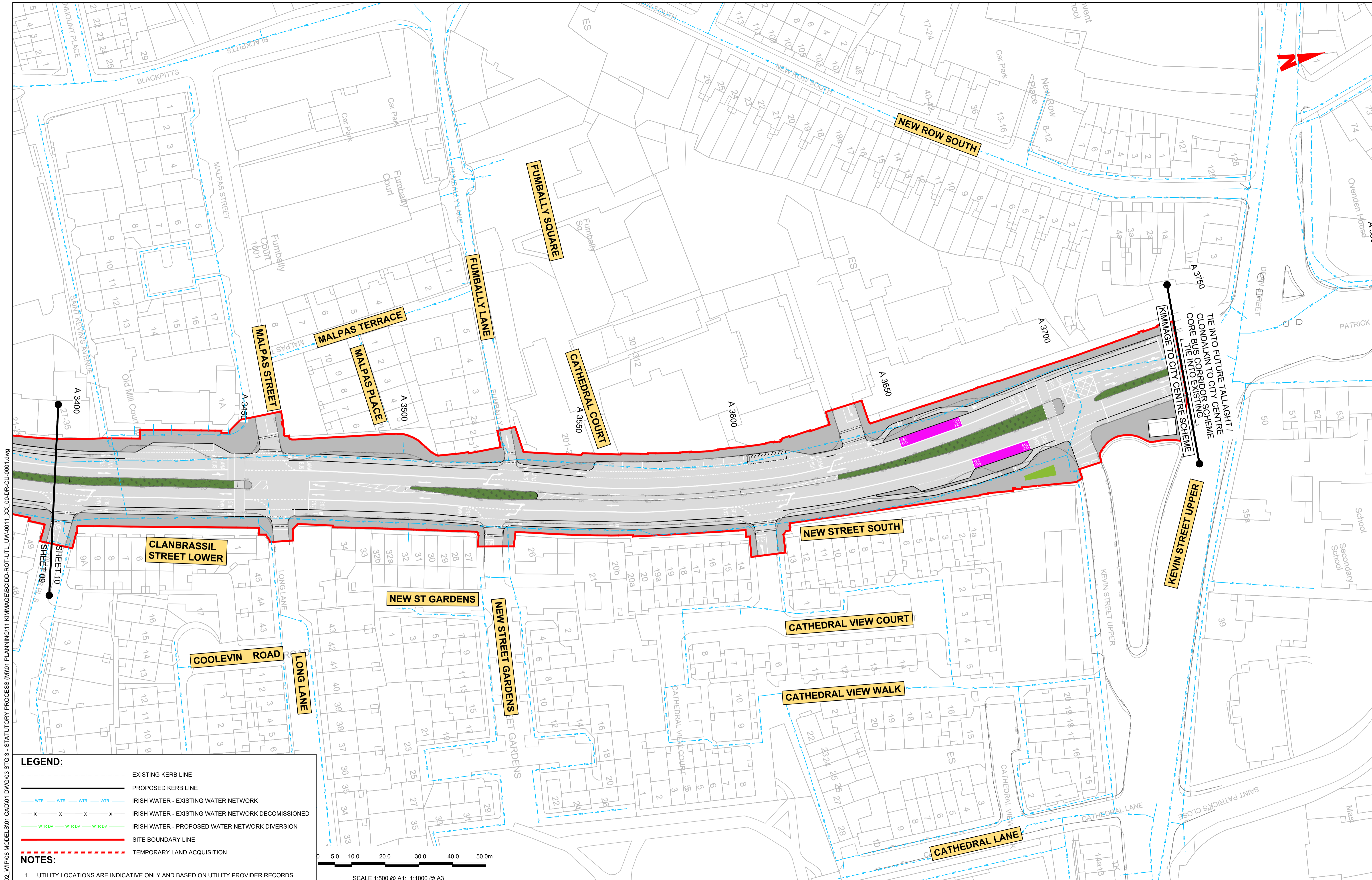
Date: FEB 2023
Scale: 1:500 @ A1
1:1000 @ A3

Programme Code: BCIDD
Originator Code: ROT

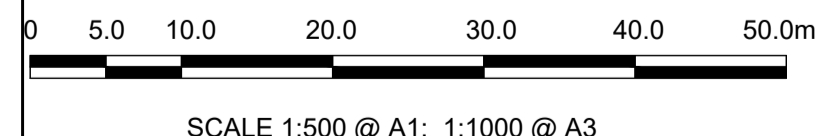
Drawn: DS
Checked: EE
Approved: SMG

Programme Title: BUSCONNECTS DUBLIN CORE BUS CORRIDORS INFRASTRUCTURE WORKS			
Drawing Title: KIMMAGE TO CITY CENTRE CORE BUS CORRIDOR SCHEME IW WATER ASSET ALTERATIONS			
Drawing File Name: BCIDD-ROT-UTL_UW-0011_XX_00-DR-CU-0009	Sheet Number: 09 of 14	Status: A	Rev: M01

DO NOT SCALE USE FIGURED DIMENSIONS ONLY



- LEGEND:**
- EXISTING KERB LINE
 - PROPOSED KERB LINE
 - IRISH WATER - EXISTING WATER NETWORK
 - IRISH WATER - EXISTING WATER NETWORK DECOMMISSIONED
 - IRISH WATER - PROPOSED WATER NETWORK DIVERSION
 - SITE BOUNDARY LINE
 - TEMPORARY LAND ACQUISITION
- NOTES:**
- UTILITY LOCATIONS ARE INDICATIVE ONLY AND BASED ON UTILITY PROVIDER RECORDS



Disclaimer

a. © National Transport Authority (NTA) 2022. This drawing is confidential and the copyright in it is owned by NTA. This drawing must not be either loaned, copied or otherwise reproduced in whole or in part or used for any purpose without the prior permission of NTA.

b. This drawing is to be used for the design element identified in the titleblock. Other information shown is to be considered indicative only. The drawing is to be read in conjunction with all other relevant design drawings.

c. O.S. data used for plans are printed under © Ordnance Survey Ireland Government of Ireland. All rights reserved. Licence Number 2022/OSI_NMA_180 National Transport Authority. All elevations are in metres and relate to OSI Geoid Model (OSGM15) Mean Head. All Co-ordinates are in Irish Transverse Mercator Grid (ITM) as defined by OSI active local GPS station.

d. Information concerning the position of apparatus shown on this drawing is based on drawings supplied by the utility owners and/or the utility works contractor, whilst every care has been taken in the preparation of this drawing, positions should be taken as approximate and are intended for general guidance only and no representation is made by the NTA as to the accuracy, completeness, sufficiency or otherwise of this drawing and the apparatus is subject to being altered and/or superseded. Recipients should not rely on this information. Any liabilities are hereby expressly disclaimed.

e. The information contained herein has been provided by the NTA but does not purport to be comprehensive or final. Recipients should not rely on the information. Neither the NTA nor any of its directors, officers, employees, agents, stakeholders or advisers make any representation or warranty as to, or accept any liability or responsibility in relation to, the adequacy, accuracy, reasonableness or completeness of the information provided as part of this document or any matter on which the information is based (including but not limited to loss or damage arising as a result of reliance by recipients on the information or any part of it). Any liabilities are hereby expressly disclaimed.



Rev	Date	Drn	Chk'd	App'd	Description
M01	FEB 2023	DS	EE	SMG	ISSUED FOR PHASE 4: PLANNING

Date	Scale	Drawn	Checked	Approved
FEB 2023	1:500 @ A1 1:1000 @ A3	DS	EE	SMG
Programme Code	Originator Code	QMS Code		
BCIDD	ROT			

Programme Title BUSCONNECTS DUBLIN CORE BUS CORRIDORS INFRASTRUCTURE WORKS			
Drawing Title KIMMAGE TO CITY CENTRE CORE BUS CORRIDOR SCHEME IW WATER ASSET ALTERATIONS			
Drawing File Name	Sheet Number	Status	Rev
BCIDD-ROT-UTL_UW-0011_XX_00-DR-CU-0010	10 of 14	A	M01

DO NOT SCALE USE FIGURED DIMENSIONS ONLY

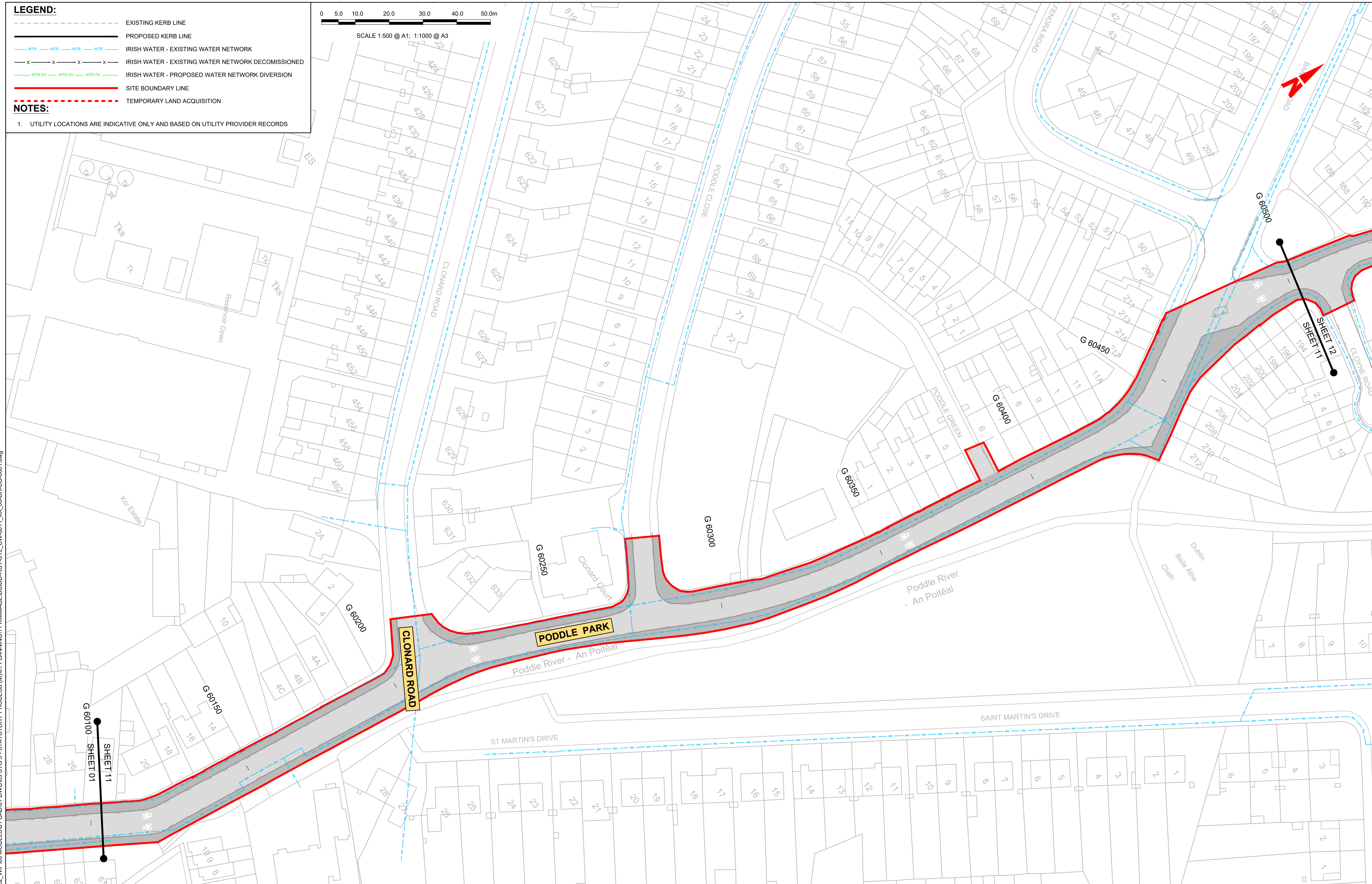
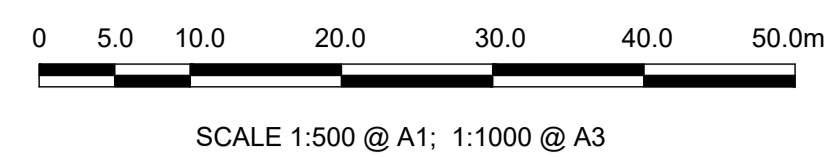
\\nodbbp1u2019191717117-02_WIP008 MODELS01 CAD001 PLANNING11 KIMMAGEICDD-ROT-UTL_UW-0011_XX_00-DR-CU-0001.dwg

LEGEND:

- EXISTING KERB LINE
- PROPOSED KERB LINE
- IRISH WATER - EXISTING WATER NETWORK
- IRISH WATER - EXISTING WATER NETWORK DECOMMISSIONED
- IRISH WATER - PROPOSED WATER NETWORK DIVERSION
- SITE BOUNDARY LINE
- TEMPORARY LAND ACQUISITION

NOTES:

- UTILITY LOCATIONS ARE INDICATIVE ONLY AND BASED ON UTILITY PROVIDER RECORDS



\\wddubhp1\j2019\1917\1917-02_WIP\08 MODELS\01 CAD\01 STATUTORY PROCESS (M)\01 PLANNING\11 KIMMAGE\BCIDD-ROT-UTL_UW-0011_XX_00-DR-CU-0001.dwg

Disclaimer

a. © National Transport Authority (NTA) 2022. This drawing is confidential and the copyright in it is owned by NTA. This drawing must not be either loaned, copied or otherwise reproduced in whole or in part or used for any purpose without the prior permission of NTA.

b. This drawing is to be used for the design element identified in the titleblock. Other information shown is to be considered indicative only. The drawing is to be read in conjunction with all other relevant design drawings.

c. O.S. data used for plans are printed under © Ordnance Survey Ireland Government of Ireland. All rights reserved. Licence Number 2022/OSI_NMA_180 National Transport Authority. All elevations are in metres and relate to OSI Geoid Model (OSGM15) Mean Head. All Co-ordinates are in Irish Transverse Mercator Grid (ITM) as defined by OSI active local GPS station.

d. Information concerning the position of apparatus shown on this drawing is based on drawings supplied by the utility owners and/or the utility works contractor, whilst every care has been taken in the preparation of this drawing, positions should be taken as approximate and are intended for general guidance only and no representation is made by the NTA as to the accuracy, completeness, sufficiency or otherwise of this drawing and the position of the apparatus. The information contained herein does not purport to be comprehensive or final as the apparatus is subject to being altered and/or superseded. Recipients should not rely on this information. Any liabilities are hereby expressly disclaimed.

e. The information contained herein has been provided by the NTA but does not purport to be comprehensive or final. Recipients should not rely on the information. Neither the NTA nor any of its directors, officers, employees, agents, stakeholders or advisers make any representation or warranty as to, or accept any liability or responsibility in relation to, the adequacy, accuracy, reasonableness or completeness of the information provided as part of this document or any matter on which the information is based (including but not limited to loss or damage arising as a result of reliance by recipients on the information or any part of it). Any liabilities are hereby expressly disclaimed.



Rev	Date	Drn	Chk'd	App'd	Description
M01	FEB 2023	DS	EE	SMG	ISSUED FOR PHASE 4: PLANNING

Client: **NTA**
Údarás Náisiúnta Iompair
National Transport Authority

Date: FEB 2023
Scale: 1:500 @ A1
1:1000 @ A3

Engineering Designer: **CIROD**
TYPSA

Drawn: DS
Checked: EE
Approved: SMG

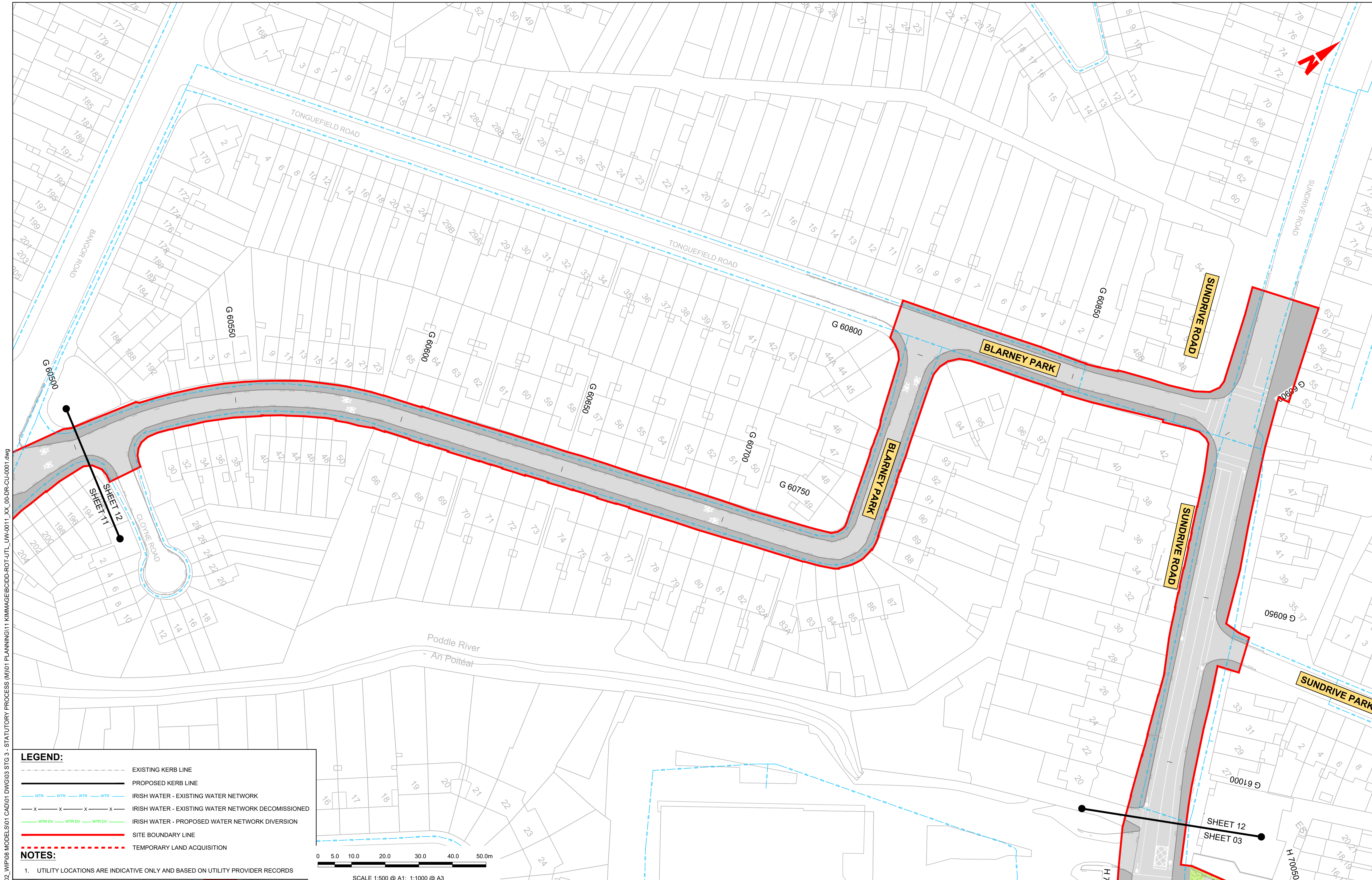
Programme Code: BCIDD
Originator Code: ROT
QMS Code:

Programme Title: **BUSCONNECTS DUBLIN**
CORE BUS CORRIDORS INFRASTRUCTURE WORKS

Drawing Title: KIMMAGE TO CITY CENTRE CORE BUS CORRIDOR SCHEME
IW WATER ASSET ALTERATIONS

Drawing File Name: BCIDD-ROT-UTL_UW-0011_XX_00-DR-CU-0011
Sheet Number: 11 of 14
Status: A
Rev: M01

DO NOT SCALE USE FIGURED DIMENSIONS ONLY

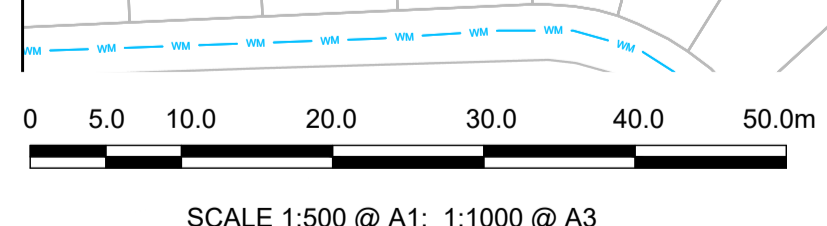


LEGEND:

- - - - - EXISTING KERB LINE
- — — — PROPOSED KERB LINE
- WTR WTR WTR WTR IRISH WATER - EXISTING WATER NETWORK
- x x x x IRISH WATER - EXISTING WATER NETWORK DECOMMISSIONED
- WTR DV WTR DV WTR DV IRISH WATER - PROPOSED WATER NETWORK DIVERSION
- — — — SITE BOUNDARY LINE
- - - - - TEMPORARY LAND ACQUISITION

NOTES:

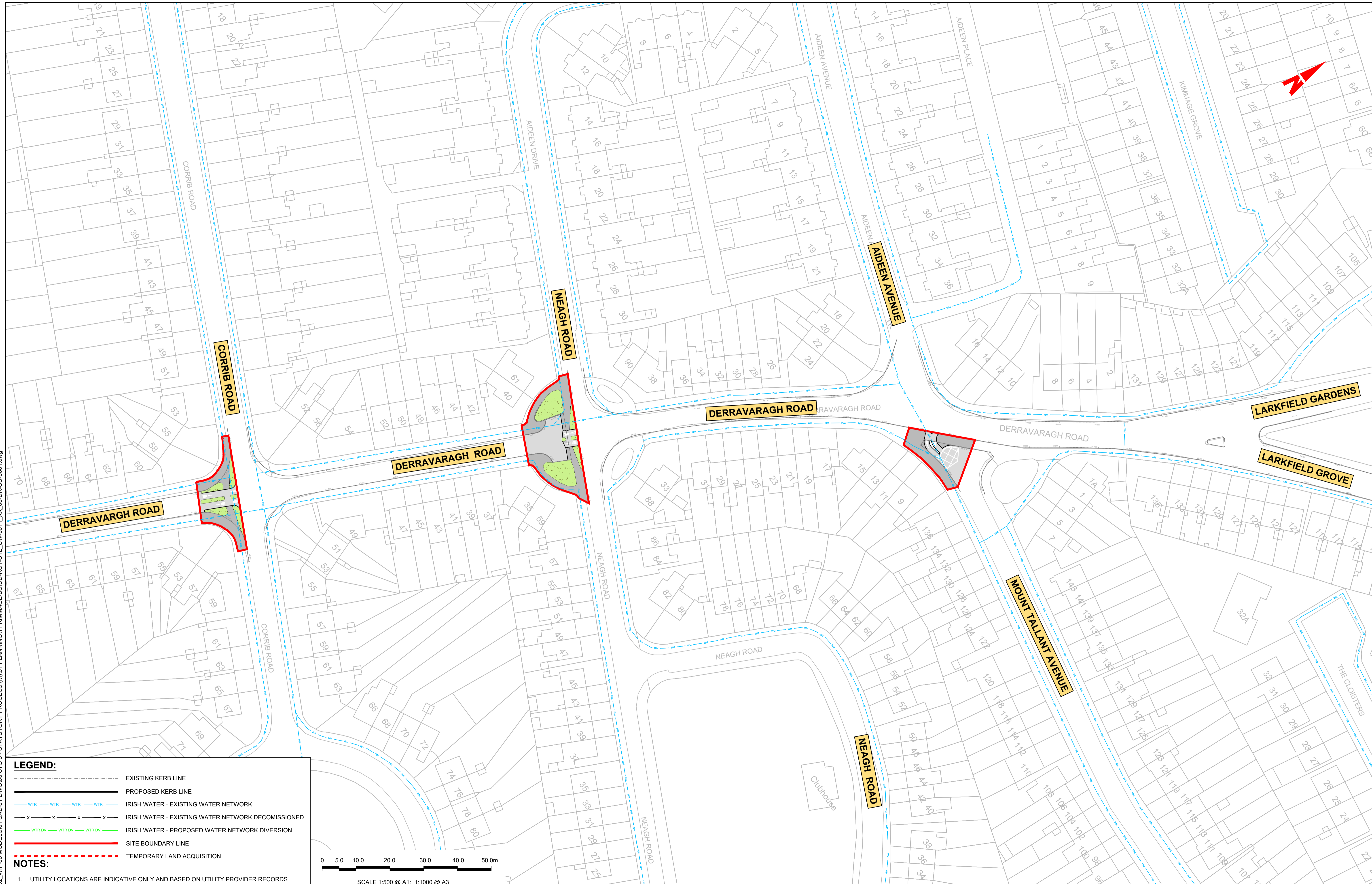
- UTILITY LOCATIONS ARE INDICATIVE ONLY AND BASED ON UTILITY PROVIDER RECORDS



W:\000000\11\17-02_WIP\08_MODELS\01_CAD\01_PLANNING\11_KIMMAGE\BCIDD-ROT-UTL_UW-0011_XX_00-DR-CU-0001.dwg

<p>Disclaimer</p> <p>a. © National Transport Authority (NTA) 2022. This drawing is confidential and the copyright in it is owned by NTA. This drawing must not be either loaned, copied or otherwise reproduced in whole or in part or used for any purpose without the prior permission of NTA.</p> <p>b. This drawing is to be used for the design element identified in the titlebox. Other information shown is to be considered indicative only. The drawing is to be read in conjunction with all other relevant design drawings.</p> <p>c. O.S. data used for plans are printed under © Ordnance Survey Ireland Government of Ireland. All rights reserved. Licence Number 2022/OSI_NMA_180 National Transport Authority. All elevations are in metres and relate to OSI Geoid Model (OSGM15) Mean Head. All Co-ordinates are in Irish Transverse Mercator Grid (ITM) as defined by OSI active local GPS station.</p> <p>d. Information concerning the position of apparatus shown on this drawing is based on drawings supplied by the utility owners and/or the utility works contractor, whilst every care has been taken in the preparation of this drawing, positions should be taken as approximate and are intended for general guidance only and no representation is made by the NTA as to the accuracy, completeness, sufficiency or otherwise of this drawing and the position of the apparatus. The information contained herein does not purport to be comprehensive or final as the apparatus is subject to being altered and/or superceded. Recipients should not rely on this information. Any liabilities are hereby expressly disclaimed.</p> <p>e. The information contained herein has been provided by the NTA but does not purport to be comprehensive or final. Recipients should not rely on the information. Neither the NTA nor any of its directors, officers, employees, agents, stakeholders or advisers make any representation or warranty as to, or accept any liability or responsibility in relation to, the adequacy, accuracy, reasonableness or completeness of the information provided as part of this document or any matter on which the information is based (including but not limited to loss or damage arising as a result of reliance by recipients on the information or any part of it). Any liabilities are hereby expressly disclaimed.</p>		<p>Rev Date Dm Chk'd App'd Description</p> <p>M01 FEB 2023 DS EE SMG ISSUED FOR PHASE 4: PLANNING</p>		<p>Client</p> <p>NTA Údarás Náisiúnta Iompair National Transport Authority</p>		<p>Engineering Designer</p> <p>CIROD TYPSA</p>			<p>Programme Title</p> <p>BUSCONNECTS DUBLIN CORE BUS CORRIDORS INFRASTRUCTURE WORKS</p>			
<p>Date FEB 2023</p> <p>Scale 1:500 @ A1 1:1000 @ A3</p> <p>Programme Code BCIDD</p> <p>Originator Code ROT</p>		<p>Drawn DS</p> <p>Checked EE</p> <p>Approved SMG</p> <p>QMS Code</p>			<p>Drawing Title</p> <p>KIMMAGE TO CITY CENTRE CORE BUS CORRIDOR SCHEME IW WATER ASSET ALTERATIONS</p>							
<p>Drawing File Name BCIDD-ROT-UTL_UW-0011_XX_00-DR-CU-0012</p>		<p>Sheet Number 12 of 14</p>		<p>Status A</p>		<p>Rev M01</p>		<p>DO NOT SCALE USE FIGURED DIMENSIONS ONLY</p>				

W:\000000\17-02_WIP\08 MODELS\01 CAD\01 PLANNING\11 KIMMAGE\BCIDD-ROT-UTL_UW-0011_XX_00-DR-CU-0001.dwg



LEGEND:

- EXISTING KERB LINE
- PROPOSED KERB LINE
- IRISH WATER - EXISTING WATER NETWORK
- IRISH WATER - EXISTING WATER NETWORK DECOMMISSIONED
- IRISH WATER - PROPOSED WATER NETWORK DIVERSION
- SITE BOUNDARY LINE
- TEMPORARY LAND ACQUISITION

NOTES:

1. UTILITY LOCATIONS ARE INDICATIVE ONLY AND BASED ON UTILITY PROVIDER RECORDS



Disclaimer

a. © National Transport Authority (NTA) 2022. This drawing is confidential and the copyright in it is owned by NTA. This drawing must not be either loaned, copied or otherwise reproduced in whole or in part or used for any purpose without the prior permission of NTA.

b. This drawing is to be used for the design element identified in the titleblock. Other information shown is to be considered indicative only. The drawing is to be read in conjunction with all other relevant design drawings.

c. O.S. data used for plans are printed under © Ordnance Survey Ireland Government of Ireland. All rights reserved. Licence Number 2022/OSI_NMA_180 National Transport Authority. All elevations are in metres and relate to OSI Geoid Model (OSGM15) Mean Head. All Co-ordinates are in Irish Transverse Mercator Grid (ITM) as defined by OSI active local GPS station.

d. Information concerning the position of apparatus shown on this drawing is based on drawings supplied by the utility owners and/or the utility works contractor, whilst every care has been taken in the preparation of this drawing, positions should be taken as approximate and are intended for general guidance only and no representation is made by the NTA as to the accuracy, completeness, sufficiency or otherwise of this drawing and the position of the apparatus. The information contained herein does not purport to be comprehensive or final as the apparatus is subject to being altered and/or superceded. Recipients should not rely on this information. Any liabilities are hereby expressly disclaimed.

e. The information contained herein has been provided by the NTA but does not purport to be comprehensive or final. Recipients should not rely on the information. Neither the NTA nor any of its directors, officers, employees, agents, stakeholders or advisers make any representation or warranty as to, or accept any liability or responsibility in relation to, the adequacy, accuracy, reasonableness or completeness of the information provided as part of this document or any matter on which the information is based (including but not limited to loss or damage arising as a result of reliance by recipients on the information or any part of it). Any liabilities are hereby expressly disclaimed.



Rev	Date	Drm	Chk'd	App'd	Description
M01	FEB 2023	DS	EE	SMG	ISSUED FOR PHASE 4: PLANNING

Client: **NTA**
Udarás Náisiúnta Iompair
National Transport Authority

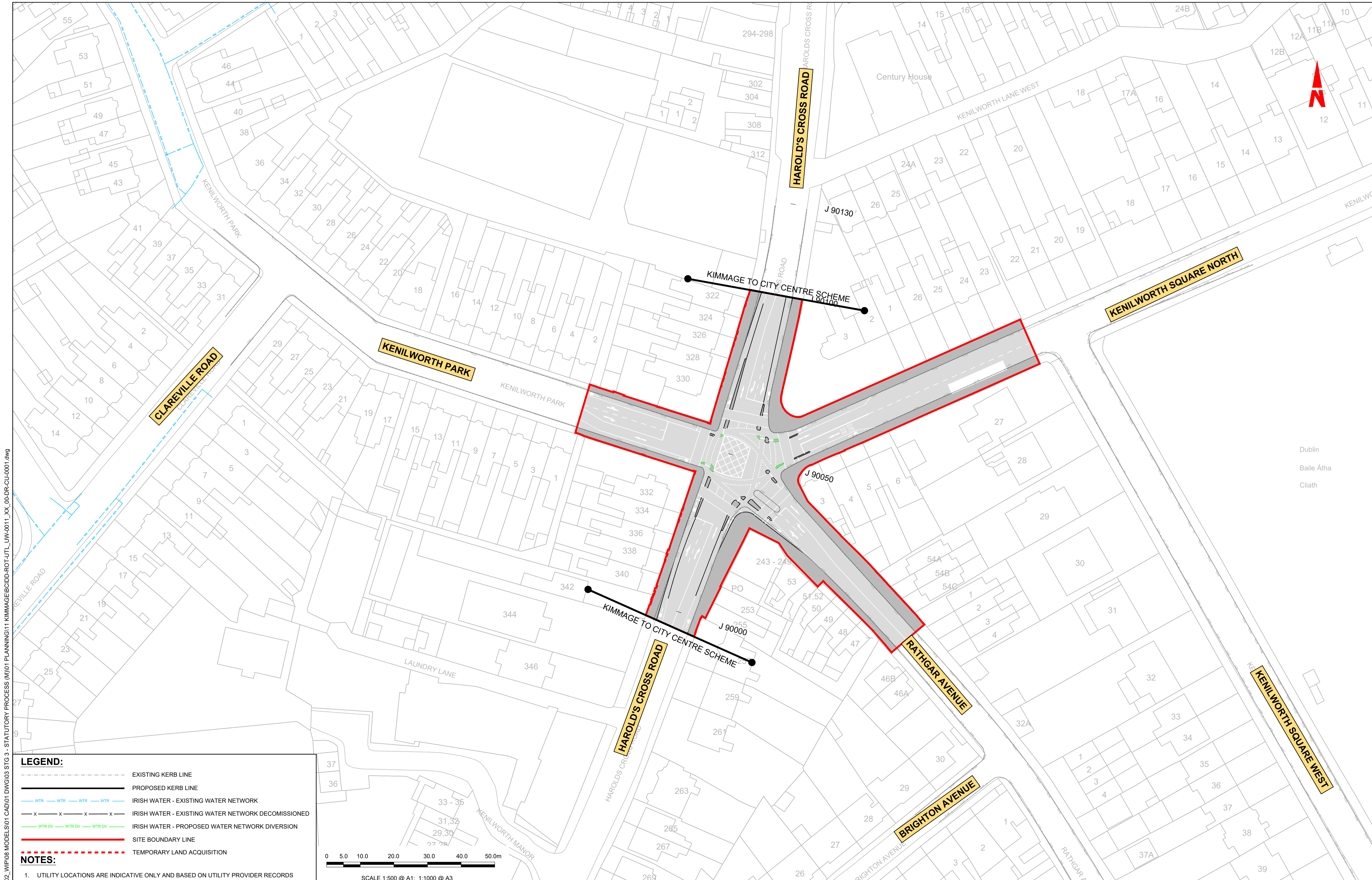
Engineering Designer: **CIROD**
TYPSA

Date: FEB 2023 | Scale: 1:500 @ A1, 1:1000 @ A3 | Drawn: DS | Checked: EE | Approved: SMG

Programme Code: BCIDD | Originator Code: ROT | QMS Code:

Programme Title: BUSCONNECTS DUBLIN CORE BUS CORRIDORS INFRASTRUCTURE WORKS			
Drawing Title: KIMMAGE TO CITY CENTRE CORE BUS CORRIDOR SCHEME IW WATER ASSET ALTERATIONS			
Drawing File Name: BCIDD-ROT-UTL_UW-0011_XX_00-DR-CU-0013	Sheet Number: 13 of 14	Status: A	Rev: M01

DO NOT SCALE USE FIGURED DIMENSIONS ONLY



W:\000000\11719117-02_WIP\08 MODELS\01 CAD\01 PLANNING\11 KIMMAGE\BCIDD-ROT-UTL_UW-0011_XX_00-DR-CU-0001.dwg

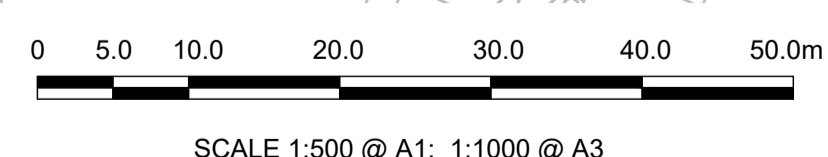
Dublin
Baile Átha
Cliath

LEGEND:

- EXISTING KERB LINE
- PROPOSED KERB LINE
- IRISH WATER - EXISTING WATER NETWORK
- IRISH WATER - EXISTING WATER NETWORK DECOMMISSIONED
- IRISH WATER - PROPOSED WATER NETWORK DIVERSION
- SITE BOUNDARY LINE
- TEMPORARY LAND ACQUISITION

NOTES:

- UTILITY LOCATIONS ARE INDICATIVE ONLY AND BASED ON UTILITY PROVIDER RECORDS



Disclaimer
 a. © National Transport Authority (NTA) 2022. This drawing is confidential and the copyright in it is owned by NTA. This drawing must not be either loaned, copied or otherwise reproduced in whole or in part or used for any purpose without the prior permission of NTA.
 b. This drawing is to be used for the design element identified in the titleblock. Other information shown is to be considered indicative only. The drawing is to be read in conjunction with all other relevant design drawings.
 c. O.S. data used for plans are printed under © Ordnance Survey Ireland Government of Ireland. All rights reserved. Licence Number 2022/OSI_NMA_180 National Transport Authority. All elevations are in metres and relate to OSI Geoid Model (OSGM15) Mean Head. All Co-ordinates are in Irish

Transverse Mercator Grid (ITM) as defined by OSI active local GPS station.
 d. Information concerning the position of apparatus shown on this drawing is based on drawings supplied by the utility owners and/or the utility works contractor, whilst every care has been taken in the preparation of this drawing, positions should be taken as approximate and are intended for general guidance only and no representation is made by the NTA as to the accuracy, completeness, sufficiency or otherwise of this drawing and the position of the apparatus. The information contained herein does not purport to be comprehensive or final as the apparatus is subject to being altered and/or superseded. Recipients should not rely on this information. Any liabilities are hereby expressly disclaimed.

The information contained herein has been provided by the NTA but does not purport to be comprehensive or final. Recipients should not rely on the information. Neither the NTA nor any of its directors, officers, employees, agents, stakeholders or advisers make any representation or warranty as to, or accept any liability or responsibility in relation to, the adequacy, accuracy, reasonableness or completeness of the information provided as part of this document or any matter on which the information is based (including but not limited to loss or damage arising as a result of reliance by recipients on the information or any part of it). Any liabilities are hereby expressly disclaimed.



Rev	Date	Drm	Chk'd	App'd	Description
M01	FEB 2023	DS	EE	SMG	ISSUED FOR PHASE 4: PLANNING

Date	Scale	Drawn	Checked	Approved
FEB 2023	1:500 @ A1 1:1000 @ A3	DS	EE	SMG
Programme Code	Originator Code	QMS Code		
BCIDD	ROT			

Programme Title BUSCONNECTS DUBLIN CORE BUS CORRIDORS INFRASTRUCTURE WORKS			
Drawing Title KIMMAGE TO CITY CENTRE CORE BUS CORRIDOR SCHEME IW WATER ASSET ALTERATIONS			
Drawing File Name	Sheet Number	Status	Rev
BCIDD-ROT-UTL_UW-0011_XX_00-DR-CU-0014	14 of 14	A	M01

DO NOT SCALE USE FIGURED DIMENSIONS ONLY